



Mail Order Catalogue

Autumn 2021

BULBS AND PLANTS TO FLOWER THIS
AUTUMN AND NEXT SPRING

Telephone 01460 242177
www.avonbulbs.co.uk

Orders over £100 are sent free
of P&P
(UK mainland
only)



WINNERS OF...

30 Gold Medals at Chelsea in 31 years (1987 – 2017)



WELCOME

Horticultural mail order businesses have been very busy because of lockdown and we have benefitted in that regard. However the pattern of life has changed quite a bit, as it has for everyone, in particular with our lack of attendance at the flower shows. We thought that they were an integral part of who we were as a business, but not having participated in one for 18 months we find that we have been busy enough 'at home' and that the work that we are able to do in the times when we should have been away has resulted in more (and more timely) propagation of plants and a tidier nursery. We also find that as a consequence we are much 'greener' - our electricity costs (running cold stores) are 41% lower. Our small solar array now generates 35% of the electricity that we use. Our use of diesel (transport to shows) is now under 10% of what we were spending pre Covid.

On the other hand we have never shied away from the fact that a proportion of what we sell is bought in, very mainly from Holland. It is now (post Brexit) much more costly in effort, time and cash to obtain bulbs from Europe. Until recently I could order bulbs on a Monday knowing that they would be with us the same week at very little additional cost. I now anticipate at least a month to get all the permissions, licences and documents in order. At the same time a greater number of growers in England (and Europe) are retiring from horticulture and it is becoming more difficult to source the sort of interesting plant material that we are happy to list. Were we all 30 years younger there are probably new opportunities in UK horticulture for enterprising young growers, but I am afraid that it is 'different' now with the costs of starting up much higher with increasing pressure to reach an efficient (large) size more quickly. That makes 'niche' horticulture and plant specialisation more difficult. Customers in Europe (and Northern Ireland) will be disappointed to know that the costs of getting orders inspected to provide Phytosanitary Certificates far exceeds what might have been expected and what is reasonable and we cannot, as a result, send orders outside of GB.

Last year I experimented with a catalogue arranged in a flowering order rather than alphabetically. I only received a few emails to say that it was unhelpful (and rather fewer from folk who indeed liked it) but on balance we found that we too needed to use the Index rather too much! Something that we normally do not need. The order has now returned to an alphabetic one within the 'seasons' that the catalogue covers and as a result there is no Index.

I would encourage our customers to order early. With news of shortages likely I had to order from Holland in March what I thought that I might sell this autumn (something I am usually reluctant to do till the end of May) and it may be the case of 'when it has gone, it has gone'. It was also a 'weird' spring as you gardeners will remember, too wet in February, too dry in April and it only warmed up in mid May. All that may affect harvests and bulb sizes so putting an order in early should ensure that you get whatever we have available that you need. It will cost you nothing more as we only charge your card accounts as we despatch the order.

Successful Gardening!

CHRIS IRELAND-JONES

AVON BULBS CONTACTS

EMAIL:
info@avonbulbs.co.uk

WEB:
www.avonbulbs.co.uk

TEL:
01460 242177
01460 249060

Burnt House Farm
Mid Lambrook
South Petherton,
Somerset
TA13 5HE

MORE INFORMATION

The website allows much more detail about individual plants and we are gradually building up that information source, so do have a look online if you are left wanting to know more about a particular plant or family and their suggested planting instructions. Individual planting suggestions are provided again when you get sent your order.

The website also indicates availability and if an item is **Sold Out** it will be indicated there. This is particularly useful for later orders.

If an item is marked **Out of Season** you can "Register an Interest" and with no commitment receive an email back when it is next in stock and can be ordered.

There are occasionally varieties that missed the catalogue and get listed online.

LATE SUMMER 2021

Bulbs that mostly flower in the autumn, shortly after planting or else ones that much prefer early autumn planting despite being spring flowering.

We aim to deliver orders made from this section ahead of orders for the Autumn section in mid August to early September. Please use the form at the end of this section.



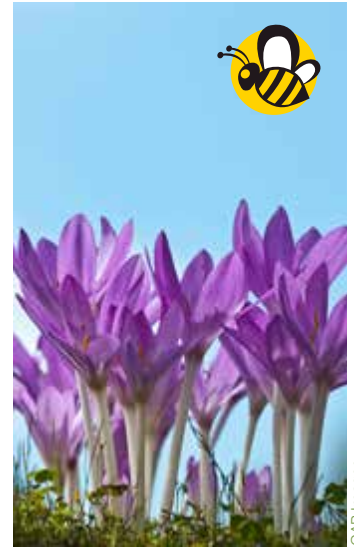
Acis autumnalis



Acis nicaeensis



Amaryllis purpurea major



Colchicum autumnale

ACIS

AUTUMNALIS



Slender wiry green or russet coloured stems, carrying delicate looking white papery bells. They were thought to be autumn flowering forms of the snowflake (Leucojum) family but are now in a distinct group of their own. Ideal for a trough or container that stays that much drier. Naturally small bulbs, only the size of large peas which get planted close together.

Aug / Sept
106-10

↔ 1" (3cm)
9" (22cm)
£8.00 for 5

NICAENSIS

A spring flowering French Snowflake – they were in the Leucojum family but have now been split off to become Acis. They hail from a small area in southwest France where they live in limestone crevices. Here they are an alpine needing some winter protection and a drier summer rest. In flower they have a flattened bell-shaped white flower over rather lax leaves.

Spring
106-11

↔ 3" (8cm)
8" (20cm)
£9.50 for 3

AMARYLLIS

The Amaryllis and their hybrids are winter growing and flower before they come into leaf in the autumn. South African in origin they consequently require more sheltered positions, we have some that do well every year at the base of a south facing wall which is (in Somerset) good enough. In cold areas one might need to grow them in pots that one can protect them further. They enjoy a hot summer baking when they are without their leaves and planting them too deep means that the soil might not get warm enough to suit them. These are the 'simple' species types, not Hippeastrum which are easily confused and are of hybrid origin and generally 'treated' to flower in the winter.

PURPUREA MAJOR

Tall stemmed with a slightly lop-sided flower arrangement of magnificent pale pink fragrant trumpets. The earliest to flower of all the Amaryllis. We will try and lift them early (to dissuade them from flowering for a bit longer) but for late orders they may well have flowered.

August
56-15

↔ 9-12" (20-30cm)
24" (60cm)
£7.50

X PARKERI ALBA

A hybrid form (Amaryllis x Brunsvigia) which forms big, rounded bulbs and flowers with apple-white hugely scented trumpets.

Aug/Sept
56-10

↔ 9-12" (20-30cm)
12" (30cm)
£8.50



Amaryllis x Parkeri alba



Colchicum autumnale album

COLCHICUM

Easy to grow in reasonably deep moisture-retentive soil, these appear from their summer dormancy without their leaves to flower in the autumn – hence their common name of 'naked ladies'. A pointer to the end of summer, their bright flowers last incredibly well considering their apparent fragility. The leaves appear in the early spring. They need planting 3" (8cm) deep - perhaps a little more for ones with bigger bulbs – and 6" (15cm) apart. They will naturalise effectively, but the mower will have to be restrained until the leaves wither away in June. ****Please order early – after the end of September they seem to flower regardless of the conditions****

AUTUMNALE

Softly, satin-sheened in mauve. They naturalise most effectively either in sun or partial shade where they often produce several flowers from each corm. An easy British native known as Meadow Saffron, Wychwood Forest has thousands flowering each autumn.

Sept
73-05

↔ 4" (10cm)
6" (15cm)
£13.00 for 3

AUTUMNALE ALBUM

The white-flowered form of the species above, although some are pinkish-white. They tolerate full sun but are especially useful in some shade in damp, but not waterlogged conditions.

Sept
73-06

↔ 3" (8cm)
6" (15cm)
£10.00 for 3

↔ = suggested plant spacing
in garden situations

Flowering time Flowering height
Item Code Price



Colchicum speciosum



Colchicum Waterlily



Colchicum byzantinum Innocence



Colchicum x agrippinum



Colchicum speciosum album

BYZANTINUM INNOCENCE

Thickly textured goblet shaped flowers in white with purple tips to the very ends of the petals and styles. Big bulbs which provide an eye-catching combination when they come to flower.

Sept
73-25

↔ 4" (10cm)
6" (15cm)
£18.50 for 3

SPECIOSUM

The best of the larger forms for most gardens, these spread and naturalise effectively. Stronger stemmed and later flowering than C. autumnale with longer flower stems and more richly coloured thick, rounded, rosy pink-lilac petals.

Sept / Oct
73-15

↔ 4" (10cm)
8" (20cm)
£11.50 for 3



SPECIOSUM ALBUM

The very best Colchicum which has been lost to commerce for many years and sorely missed except that I had a call from Scotland where some grow 'nearly wild' – would I like some? Of course! The assurance is that there will be quite a few but I have yet to see them, so these are sold on a 'promise' and I may yet have egg on my face. Big bold goblet shaped flowers in pure white, ideal for part shade.

Sept/Oct
73-16

↔ 4" (10cm)
8" (20cm)
£20.00 for 3



WATERLILY

A multi-petalled variety which opens out widely in the sun with multiple flower stems, flowering somewhat later than the others. Surprisingly resilient to the weather despite its appearance.

Oct
73-23

↔ 6" (15cm)
6" (15cm)
£13.00 for 3



X AGRIPPINUM

A smaller plant that the others we list and one to treasure in a raised bed or in a trough. The flowers open nearly flat with pointed tips, covered in wonderful darker pinkish purple tessellations (chequering). An unusual and special plant of which we only have a small number, but none too difficult if you have the right place.

Sept
73-19

↔ 3" (8cm)
4" (10cm)
£5.50



↔ = suggested plant spacing
in garden situations
Flowering time
Item Code
Flowering height
Price



**Insect friendly
Plants**

We believe the plants where you see this symbol to be particularly beneficial to pollinating insects such as bees, butterflies, moths and hover flies.

CROCUS AUTUMN FLOWERING FORMS

Flowering in the late autumn (except for one that flowers in the very early spring) These Autumn flowering Crocuses bloom as a reaction to the lowering of the soil temperatures (and the dampening of the soil) at the end of the summer. The spring flowering forms (listed in the Autumn section of our catalogue) flower as the soil temperatures rise. Some of these are more difficult to grow than others, but *C. speciosus* should be a feature of any garden providing a dreamy violet splash of colour in late September and October (and is probably the easiest). We may be able to add some more varieties to this list Online later in the summer.



GAP Images



Crocus goulimyi Mani White

GOULIMYI MANI WHITE

We inadvertently and very carelessly muddled up the 'ordinary' *C. goulimyi* and the Mani white some years ago and have finally sorted them out. They are too Grecian in origin for 'ordinary' outdoor conditions in the UK, but in well drained compost in a pot to which you can provide some protection (with a dry summer rest) these are beautiful creamy white flowers. Stock limited.

Nov
77-33

↔ 2" (5cm)
5" (12cm)
£9.00 for 3

NUDIFLORUS

Easy to grow in the garden and even individual flowers popping up are a joy, but difficult to commercialise as they dislike cultivation. Hence rarely offered and likely to be small bulbed. But a fairly tall, dark flowered crocus well able to grow in short grass, they form stolons and so tend to move in the soil and set seed so one hopes will increase one way or another.

Oct
77-42

↔ 2" (5cm) but probably
much more
5" (12cm)
£9.00 for 3

SATIVUS

The source of Saffron: gathered by collecting the tiny bright red stigmata from each flower (it takes half a million per kilo! thereby justifying the huge cost of Saffron). They need deep planting in rich soil, in a sunny position and probably need lifting and dividing with regularity to encourage flowering. Their flower production is triggered by suddenly colder nights, our maritime climate sometimes does not provide that, which makes guaranteeing one's own Saffron production a bit uncertain.

Oct
77-20

↔ 3" (8cm)
4" (10cm)
£16.50 for 30

SPECIOSUS

The best autumn crocus. Dramatically effective, deep lilac to purple hues, with bright yellow anthers. Good in light shade or under deciduous shrubs, or in light grass, planted deeply. They will flower later than suggested in their first year, consequent to them having been out of the soil and dried off in this summer. Do get enough of them! Suggested planting density 15 per sq. ft.

Sept / Oct
77-26

↔ 3" (8cm)
5" (12cm)
£5.00 for 15 or £15.00 for 50



Crocus nudiflorus



Crocus speciosus



Crocus sativus

GAP Images



Gladiolus tristis



Crocus tournefortii



Nerine flexuosa alba

SPECIOSUS ALBUS

All white flowered, great for a contrast amongst the others or a bright creamy white splash all on their own.

Sept / Oct
77-27

↔ 3" (8cm)
5" (12cm)
£6.50 for 15

TOURNEFORTII

Large flowered in pale lavender, sometimes white. Strangely the flowers do not close in dull light or at night. Cretan in origin so they require some shelter.

Sept / Oct
77-38

↔ 3" (8cm)
5" (12cm)
£9.00 for 3

GLADIOLUS

TRISTIS

Native to South Africa, but not quite hardy enough to trust outdoors full time, even here. A very special winter growing Gladiolus with a wonderful scent in the evenings – believe me, it does not scent by day but come the evening...! Presumably moths are the pollinator. It really needs a sheltered site, providing protection from temperatures lower than about -5°C as they are in leaf through January and February. The apple white flowers open progressively up the long rush-like stems and produce a generous seed set.

April / May
88-15

↔ 3" (8cm)
3" (90cm)
£15.00 for 3

HIPPEASTRUM

X ACRAMANNII

I have in the past alluded to doubts over the spelling of this name, but I have been pointed to EB Anderson's "Seven Gardens" and am more than content to follow his lead and stick with this one. He grew this plant out of doors at Porlock in the 1960s. Having been shown a private greenhouse full of these bulbs in flower many years ago near Taunton and admired them hugely (only later to find that the owner passed away soon after and his greenhouse had been demolished) it was much later that I was offered a stock from the Isle of Man and jumped at the second opportunity. These multiply well under unheated glass for us, however reading about them I find that others suggest that they are hardier than one anticipates, confirmed by letters from much more northern customers. They are early autumn flowering in red and green and are in leaf all winter, more dormant in summer, although maybe come into flower earlier than they would out of doors. Very limited numbers available this year.

↔ 9-12" (20-30cm)

Aug / Sept
56-14

18" (45cm)
£13.00

NERINE

FLEXUOSA ALBA

A winter growing species (all the others we grow are summer growing) so these require a bit more shelter. The frilly white petals however last ages in flower and in sheltered gardens are a treat in the autumn.

↔ 6" (15cm)

Sept / Oct
33-23

14" (35cm)
£9.50 for 3



Hippeastrum x acramannii



Crocus speciosus albus



**Insect friendly
Plants**



Romulea bulbocodium



Tecophilaea cyanocrocus leichtlinii



Tropaeolum tricolor



Scilla autumnalis



Tecophilaea cyanocrocus violacea



Veltheimia bracteata

ROMULEA

BULBOCODIUM

A small crocus-like bulbs from the Mediterranean where it grows in sandy or rocky places. A sun lover which we would suggest is pot grown and brought in for winter just to keep them drier, some suggest that they don't even need this attention. Velvety open flowers in shades of lilac and purple.

↔ 1" or less (2cm)

Spring
199-01

3" (8cm)
£7.00 for 3

SCILLA

AUTUMNALIS

Hardy, but uncommon small bulbous natives of the south-west of the UK, these are incredibly long-lasting in flower. Bright blue flowers up a fine wiry stem. They need a sunny, well-drained soil.

↔ 3" (9cm)
5" (12cm)
£7.00 for 3

Aug/Oct
125-18

TECOPHILAEA

Chilean bulbs from a high altitude, so one would expect them to be cold tolerant, but where they come from is relatively dry, and our winters are really too wet for them. If possible, grow them under some protection (particularly from rain) and you'll be amazed by the depth of colour in the flowers. Their blue is like the dazzling displays produced by some exotic butterflies.

CYANOCROCUS LEICHTLINII

White centred with gentian blue petals.

March
128-04

CYANOCROCUS VIOLACEA

Amazingly brilliant dark blue petals.

March
128-06

↔ 3" (9cm)
5" (12cm)
£11.00 for 3

↔ 3" (9cm)
5" (12cm)
£11.00 for 3

TROPAEOLUM

A winter-growing form of these climbing plants, they start to grow in late September and flower in late spring. Their hardiness is probably limited if temperatures fall below about -5°C for any extended period but they are actually happier grown somewhere cool rather than too warm. Grow in pots with something to climb up and then protect them during only the very coldest weather.

TRICOLOR

Exhibiting shoals of stunning red, black and yellow flowers that last ages in flower. A climber that starts into growth very early in the autumn so early ordering is a must. One of the most spectacular plants that we sell, and a favourite of mine.

Spring
47-06

↔ 6" (15cm)
climbing up to 4' (120cm)
£4.50 or £12.00 for 3

VELTHEIMIA

Originating in South Africa on the edge of the Karoo desert these are bulbous house plants here. Winter growing with flowers late autumn and winter they like to receive fairly good light levels but are generally very easy to look after with a long flowering period and in the summer a drier resting period.

BRACTEATA

Glossy leaved beauties with broad, rather succulent-like foliage and upright spikes of flowers that just call out for a hummingbird to pollenate them!

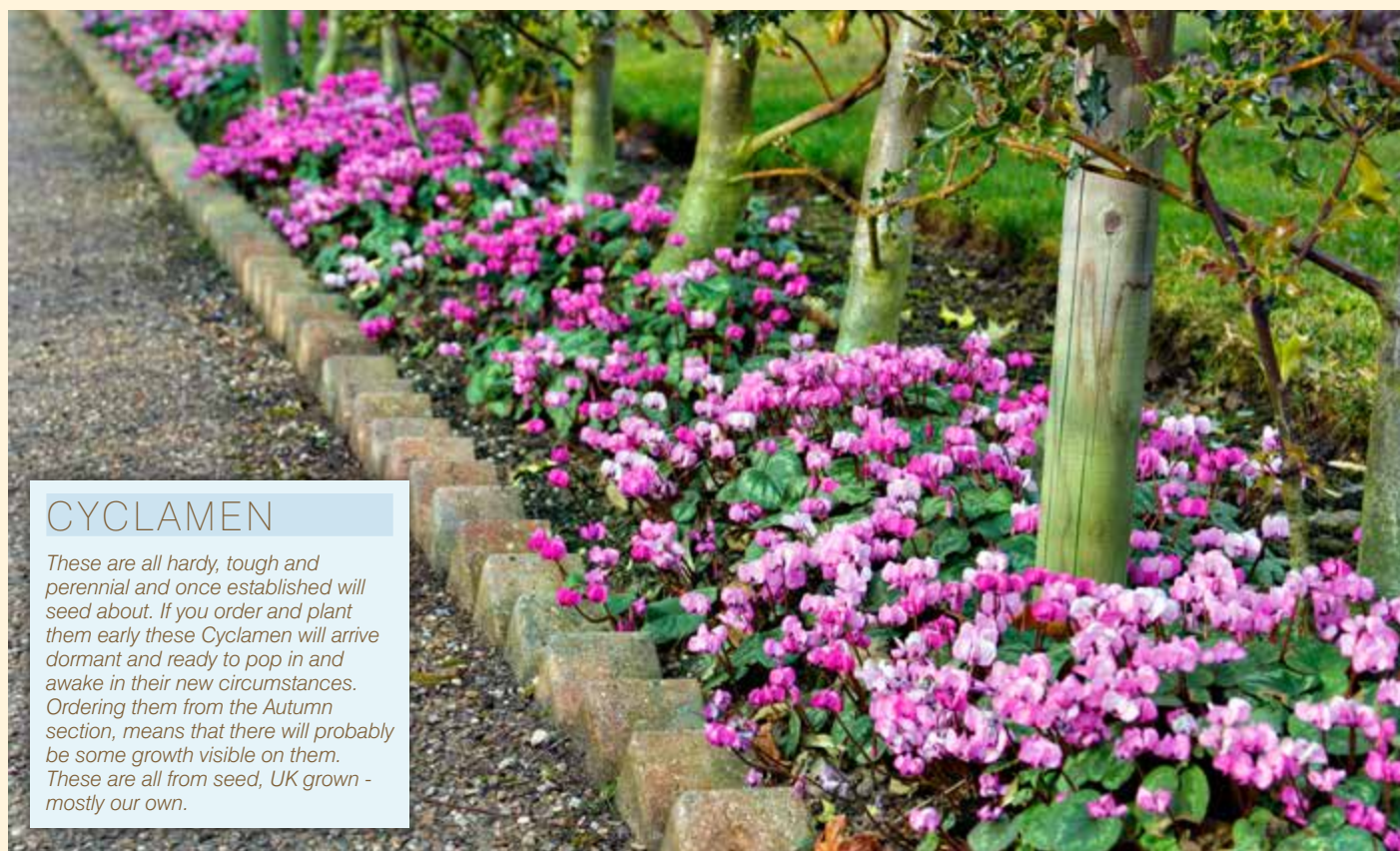
Winter
170-01

↔ 6" (15cm)
18" (45cm)
£8.50

↔ = suggested plant spacing
in garden situations
Flowering time
Item Code
Flowering height
Price

The following bulbs can be included on either a Late Summer or an Autumn order form as stocks allow.

If you order them alone they will be sent as soon as we can, but order them with anything else and their 'delivery season' will be determined by what else you order. They would all benefit from earlier planting if possible.



GAP Images

CYCLAMEN

These are all hardy, tough and perennial and once established will seed about. If you order and plant them early these Cyclamen will arrive dormant and ready to pop in and awake in their new circumstances. Ordering them from the Autumn section, means that there will probably be some growth visible on them. These are all from seed, UK grown - mostly our own.



Cyclamen coum



Cyclamen coum album



Cyclamen coum Dark Pink



Cyclamen coum Roseum

SPRING FLOWERING FORMS

COUM

In their first or second flowering season these were not graded for colour in the spring so may be white or pink flowered but will be generally smaller in size than the colour selected forms of C. coum below which are all a year older.

↔ 5" (13cm)

Feb / March
51-116

£15.00 for 5



COUM ALBUM

White flowered, but even the white ones have a dark pink 'nose'.

↔ 5" (13cm)

Feb / March
51-118

£15.00 for 3

COUM DARK PINK

Tubers that have been selected for their dark pink flowers.

↔ 5" (13cm)

Feb / March
51-131

£15.00 for 3

COUM ROSEUM

Graded for flower colour in the spring so these are larger tubered and all will show pale pink flowers with the characteristically darker 'nose'.

↔ 5" (13cm)

Feb / March
51-117

£15.00 for 3



Cyclamen coum Maurice Dryden

Cyclamen pseudibericum



Cyclamen coum Silver Leaf



Cyclamen libanoticum



Cyclamen repandum

COUM SILVER LEAF

The rounded leaves are largely silvery patterned, so a few tubers planted amongst others with more green leaves increases the variety of the green tapestry, their flowers are mostly pink.

↔ 5" (13cm)

Feb / March
51-119

£6.00

COUM MAURICE DRYDEN

These are silver leaved and white flowered, sometimes with a pink blush. The form honouring the husband of the great Kath Dryden - Alpinist of note, kindness personified, although her bark was effective!

↔ 5" (13cm)

Feb / March
51-06

£6.50

LIBANOTICUM

Less hardy than C. coum and really requiring winter protection against the wet in particular. Strongly spicily scented - with long lasting pale pink flowers.

↔ 5" (13cm)

March / April
51-34

£6.50

PSEUDIBERICUM

Possibly slightly more tender than the bone hardy C. coum and flowering a little later than coum does. The leaves are marbled in white and the flowers are mainly white with darker blotches and a white throat. Hardy enough to grow outside in the south, but a lovely plant for the alpine house anywhere.

↔ 5" (13cm)

March / April
51-35

£6.50



REPANDUM

Better in more sheltered conditions and certainly needing more shade and leaf mould in the soil where they need to be planted more deeply. Only properly hardy in the south, though special circumstances may affect that generalisation, small bulbs which need careful handling - I feel that I am using too many caveats! The positives are many - they provide spicily fragrant, deep carmine-coloured flowers in late spring and like the others they do set seed and spread where happy.

↔ 5" (13cm)

April / May
51-129

£6.50

↔ = suggested plant spacing
in garden situations

Flowering time	Flowering height
Item Code	Price



Cyclamen africanum



Iris unguicularis



Iris unguicularis Mary Barnard



Cyclamen hederifolium



Iris unguicularis Marondera



Iris unguicularis Walter Butt

AUTUMN FLOWERING FORMS

AFRICANUM

Leathery leaved and in leaf through the winter and spring after which they need a perfectly dry summer rest. Large, more rounded, pink flowers in the late autumn. Best in fairly light conditions and because they are tender, they are limited in most circumstances to protected cultivation.

↔ 6-8" (15-20cm)

Oct / Nov
51-36

£4.00

HEDERIFOLIUM

These tubers may not have flowered last autumn so may be pink or white (though pink will dominate). The petals sweep up and away from the flower and in the spring (and for much of the year after) the ground will be carpeted in their ivy-leaf shaped leaves.

↔ 6-8" (15-20cm)

Aug / Oct
51-107

£9.00 for 3

IRIS UNGUICULARIS (STYLOSA)

A firm favourite for the winter garden. They need a sunny site and are often found growing in rubble right up against the house wall or in very poor soils, but they will perform even better if the growing conditions are not too harsh. Avoid the inclination to shear off the untidy foliage in the summer, instead rake out some of the dead leaves in the early autumn and give the plant some water and a liquid feed at the same time. It is then that they make their new roots and are initiating their flower buds so that should result in more flowers in the following winter. New divisions need careful planting and firming in, regular watering till established and possibly some protection in their first winter.

UNGUICULARIS

The species plant with pale mauve flowers, the standards slightly paler and more silvery. A tough survivor even in poor soil conditions.

↔ 12" (30cm)

15" (38cm)

£7.50

Feb / March
102-04

U. MARONDERA

Bigger flowered than the 'ordinary' unguicularis and slightly darker, this is a strain that goes back to a garden in the town of that name in Zimbabwe (where Chris was raised). It is as good and tough as all the others, and now like him goes back a long way.

↔ 12" (30cm)

15" (38cm)

£9.00

Feb / March
102-13

U. MARY BARNARD

The darkest of them all and a glossy marvel in the winter. Tissue-like velvety purple blue flowers with white and golden markings on the falls, the foliage shorter and darker than the other forms. Discovered by E.B. Anderson near Algiers in 1962.

↔ 12" (30cm)

15" (38cm)

£9.00

Feb / March
102-05

U. WALTER BUTT

Palest of pale ice blues with some fine purple veining, drawing one's attention to the fact that they are not white. Longer leaved and with more upright, paler, foliage. The first form to flower with the largest flowers and the most scented too.

↔ 12" (30cm)

18" (45cm)

£9.00

Nov / Feb
102-06

↔ = suggested plant spacing
in garden situations

Flowering time
Item Code

Flowering height
Price



LILIUM

CANDIDUM

A lily that is better started off early, even in October some are beginning to show their leaves. Inevitably the first orders get the pick of the crop, so ordering from this section has its benefits.

↔ 6" (15cm)

June 36" (90cm)
107-114 £7.00 or £20.00 for 3

NARCISSUS

Also see the main Autumn Catalogue pages 38 for the main Narcissus listing. From an early planting these can help overcome the mid-winter blues in the house, but planted relatively late (late December) they are actually easier to care for and to reuse because the foliage does not get so leggy and they can go outside after flowering in March, by when most of the cold has gone. They will still need a hot dry resting phase in August.

PAPERWHITE ZIVA

Early to flower from being forced; we reckon on about eight to ten weeks to bloom from potting, so work your potting date out from when you want them in flower. White flowered and multi-headed, with a huge room-filling perfume. Grow them in good light and at cool temperatures without freezing so that they don't get too tall, only bringing them in to admire at room temperatures for their final flourish. Not reliably hardy.

↔ 1-2" (2-4cm) (potted)

Dec / Jan 15" (38cm)
113-152 £9.00 for 5 or £11.50 for 7



Order for Late Summer Despatch 2021

Bulbs that need Early Planting this Autumn

You may include any plants or bulbs from the preceding pages as well as any 'non seasonal items' such as Gloves, Books, Cards, Pots etc.
Please specify plants and costs here, and complete the other side of the form

[illegible]

The example at the top shows the information we need – in particular, the **item code** given at the bottom left of the plant's entry.

If possible, specify acceptable alternatives in case some of your choices are not available.

If you want your order to be sent as a gift to someone else (invoice to you), tick the box and put the recipient's name and address and postcode in the space provided in Other Delivery Instructions.

Is this an order for collection? ☐

Is it a gift? ☐

Please record personal and payment details overleaf

Order for Late Summer Despatch 2021

Bulbs that need Early Planting this Autumn

Office use only:	
Date received:	Order No:

**Avon Bulbs Ltd • Burnt House Farm • Mid Lambrook
South Petherton • Somerset • TA13 5HE**

Title: Mr ☐ Mrs ☐ Miss ☐ Other _____

Name: _____

House name/number: _____

Street: _____

Town: _____

County: _____

Country: _____ Postcode _____

Contact number: _____

Tel: _____ Mob: _____

Email address: _____

Other delivery instructions/safeplace leaving: _____

Please complete these questions (We now need your permission to stay in touch, except with regard to this order)

(We will not sell or pass on any contact details except to manage your order - see GDPR information across)

Payment:

Orders are not accepted without payment except by prior agreement.
Please include payment or please charge my Visa/Mastercard account.

Cheque enclosed ☐ Yes, value £ _____, or

Card No. • • •

Card expiry date /

Security code (last three digits on reverse of card)

Signature _____

GDPR

The new rules on Data Protection that came into force in May 2018 apply to everyone storing and using your personal data.

We collect information about you when you register with us or place an order for products or services. We also collect information when you voluntarily complete customer surveys, provide feedback and participate in competitions. Website usage information is collected using cookies.

Although we take your payment details when you place an order those details are only held by our Payment Provider (not ourselves) and we receive an encrypted 'token' in return. The card details are securely stored on PCI compliant servers with the Payment Provider. We only have access to the last 4 digits of your payment card for identification purposes. Any information provided to the Payment Provider is only used for the purpose of completing your transaction with Avon Bulbs. The paper record of your payment is shredded after use.

We will hold Information about services or products that we have provided to you in the past, including the service(s) or product(s) provided, when and where, the amount that you paid, billing address and where the item was sent (if applicable), and any other information required to process a transaction. We will retain your information for as long as is required to provide you with a good service whenever you contact us regarding past orders.

Once you are a customer or have requested an Avon Bulbs catalogue, we will send you further catalogues in the post from time to time, which is allowed under the GDPR regulations as a 'legitimate interest'. You can, of course, contact us and request that we stop sending you direct mail. If you are a new customer and give your permission or if you subscribe to (and thereby give your consent to receive) our newsletter via the Avon Bulbs website, we may occasionally email you about our products and services that we think may be of interest to you. You can unsubscribe to these marketing emails by following the UNSUBSCRIBE link at the bottom of each email. If you have consented to receive marketing information, you may opt out at any time by contacting us. You have the right at any time to stop us from contacting you for marketing purposes. You can now update your mailing preferences through your website account.



AUTUMN 2021

Plants and Bulbs to plant in the Autumn, mostly to flower the following spring. Despatch of these items begins in early to mid September with the intention of sending everything on your order in one parcel. For further information see the 'Ordering from Avon Bulbs' section at the back.

You may include plants and bulbs from the preceding section Cyclamen to Narcissus to be sent with those that follow as Autumn items.

ALLIUM

Alliums are always welcome to gardeners in the early summer as the flowers offer height and distinction when most gardens are not quite so colourful. Their exclamation mark shape differentiates them from the plants around them, and those companion plants in turn 'hide' what is sometimes distracting foliage, which (in most of these Alliums) is beginning to yellow at flowering time. They are generally plants of sunny and well-drained soils, and can be used either in dramatic eye-catching sweeps, or else, in a more cottagey style, in isolated small groups to equally good effect.

Everyone seems to love Alliums and, knowing that the beneficial insects and bees are struggling nowadays, it is worth a reminder that Alliums provide a fantastic food supply for those insects, especially the late flowering forms. Our beds of *A. angulosum*, *A. glaucum* and *A. tuberosum* shimmer with activity on sunny summer days. Try out a number of different forms to see which do best in your circumstances. The results of a trial over the past years at Wisley have been published in a useful booklet called the RHS Grower Guide on Ornamental Onions.



Allium Ambassador



Allium angulosum



Allium caeruleum



Allium Cameleon

 **AMBASSADOR** 


Beginning to flower in late May these flowers should see one through all of June and into July with very tall stems topped by their mid purple heads about 6" (15cm) across. Very big bulbed plants benefitting from deep planting to ensure that the stems remain firmly upright. Good seed heads follow the main flower show.

↔ 8-12" (20-30cm) or more
June/ July up to 50" (130 cm)
53-60 £6.00 or £15.00 for 3

 **ANGULOSUM (PYRENAICUM)**

Wonderfully easy to grow plants. Bright glossy green leaved with lots of pale lilac flowers in the height of summer when butterflies and hoverflies jostle to feed on them. We supply small clumps to be planted 9" (22cm) apart, in the sun where it is not too dry. Divide them again when they are thick.

↔ 9" (22cm) per clump
July/Aug 12" (30cm)
53-28 £8.00 for 3
(divisions, not true bulbs)

 **CÆRULEUM**

Unusual blue flowered drumstick flowers originating from the steppes of Russia and China. They will do best in a well-drained sunny spot or rockery where the small bulbs can be planted quite closely, only 1-2" (2.5-5cm) apart.

↔ 1-2" (3-5cm)
18" (45cm)
June £5.30 for 15
53-14

↔ = suggested plant spacing in garden situations

Flowering time Item Code	Flowering height Price
-----------------------------	---------------------------

 **CAMELEON**

Naturally small bulbed with early summer flowering heads that start out quite pink and fade to pearl white by when only the ribs retain the pink colouring. One for the rockery or for the front of the border in fairly free draining soil and good light.

↔ 1-4" (2-10cm)
18" (45cm)
June £5.50 for 10 or £10.00 for 20
53-73



Allium cernuum



Allium cristophii



Allium giganteum



Allium cernuum White Master



Allium Early Emperor



Allium Globemaster

CERNUUM

Dainty chandeliers formed of dozens of small claret pink flowers hanging off the nodding stems so the bees have to hang upside down to get at the flowers, sometimes several heads form in a succession. Easy to grow and seeding themselves in lighter soils in the sun. Delivered as fresh dug flowering size plants rather than dry bulbs.

↔ 3-4" (8-10cm)
Summer 18" (45cm)
53-04 £8.30 for 5

CERNUUM WHITE MASTER

The white flowered form of the plant above, just as easy but I suspect that its seed may result in both pink and white flowered plants.

↔ 3-4" (8-10cm)
Summer 18" (45cm)
53-72 £7.50 for 3

CRISTOPHII

If you only ever buy two or three Alliums, this must be one of them. Sculptural flower heads, initially greenish purple, are gradually transformed as they are pollinated into metallic silvery-violet coloured spheres about 8" (20cm) across, all borne on quite stocky stems. The round melon sized heads naturally complement the purples of rampant geraniums or the spikier silvery blues of Lavender. Buff coloured seed heads follow. Plant them 8+" (20cm) apart in sunny well drained soils in borders or even rough grass, they will also grow in a degree of shade, but will be taller when grown in more shade.

↔ 8" (20cm) or more
June 10-24" (25-60cm)
53-11 £3.00 for 3, £9.00 for 10
or £16.00 for 20

EARLY EMPEROR

The parentage of this hybrid means that while it is still a big flower at about 6" (15cm) across it flowers considerably earlier than the other large headed Alliums and it is not quite so tall. The flowers are rosy lilac with contrasting silvery white stamens providing a halo like sheen.

↔ 8" (20cm)
May 30" (75cm)
53-68 £11.00 for 3

GIGANTEUM

Densely filled heads in pale purple the size of a grapefruit top each tall bare stem. A central Asian species requiring well-drained soils and a sunny site, by the time that they flower the leaves have mostly withered away. Its name is a reference to its impressive height rather than to an enormous flower. A seedhead looking like a grass thatched hut remains at the end.

↔ 8-12" (20-30cm)
Late June/July 48" (120cm)
53-20 £15.00 for 3

GLOBEMASTER

Probably the best of the large headed Allium hybrids with exceptionally long lasting flowers. The first array is replaced by another second flush of their deep violet-purple flowers. The insects still love to feed on them, although despite their attentions you'll not be left with a remnant seed head as they are sterile. Tidier leaved than most, even at flowering time. Plant them about 12" (45cm) apart in well drained soils in good light. Great planted with Astrantia 'Roma'.

↔ 18" (45cm) or more
May/June 40" (100cm)
53-46 £16.00 for 3



**Insect friendly
Plants**

We believe the plants where you see this symbol to be particularly beneficial to pollinating insects such as bees, butterflies, moths and hover flies.



Allium karataviense



Allium hyalinum



Allium nigrum



Allium Mount Everest



Allium Purple Sensation



Allium hollandicum



Allium lenkoranicum

HOLLANDICUM

Best for bigger gardens, or wherever you might want a more subtle and textured display. These provide that irregularity in colour, height, size and maturity which adds subtlety and charm to any planting, especially one on a bigger scale. Deep lilac to pale purple flowers about the size of an orange. Easy in any free draining soil in the sun, planted about 6" (15cm) apart.

May/ June 24-36" (60-90cm)
53-08 £4.20 for 5, £7.50 for 10
or £14.00 for 20

HOLLANDICUM PURPLE SENSATION

An intensely deep purple coloured strain, with heads the size of small oranges. Another of that select group of those 'must have' Alliums. They provide purple polka dots to your planting scheme, adding colour, texture and geometric silhouettes to your borders. Derived from a clone these should all be the same hue. The RHS trial report said of them: "an excellent performance and is reliably perennial".

May/ June 35" (90cm)
53-09 £4.60 for 5, £8.60 for 10
or £16.00 for 20

HYALINUM

A species from California where it grows on shady canyon slopes in the Sierra Nevada around 1200m. Star shaped flowers in pale pink with needle like grey leaves, but very floriferous. They need good drainage and drier summer rest. Naturally very small bulbed (about pea sized) setting lots of seed.

May 12" (30cm)
53-70 £4.00 for 5

KARATAVIENSE

These are very broad leaved and grow close to the ground with a ruby red margin around the leaf and a white flower tinged pink. Their best use is in full sun on a raised bed or rockery where the foliage provides a very metallic looking and modern effect long before (and after) the flowers.

May/June 10" (25cm)
53-22 £5.00 for 3 or £13.50 for 9

LENKORANICUM

A quirky, wispy plant native to Azerbaijan and reportedly only discovered in 1987, it increases to small clumps fairly readily and increases from seed in a sunny bed in well drained soils. It lasts ages in flower, and for the second half of the year seems never to be without flowers. From division and as growing plants.

Summer 12" (30cm)
53-21 £4.50 for 3

MOUNT EVEREST

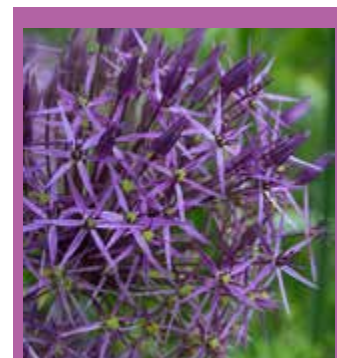
Probably the best tall white flowered Allium. Grapefruit sized heads top a tall glossy green stem. The leaves persist, so are not too obtrusive at flowering time. Lovely when combined with other strong coloured flowers such as Gladiolus byzantinus, and ideally planted against a dark backdrop, though some planted in the dappled shade of a Laburnum are great. We suggest that they are planted about 12" (30cm) apart.

May/June 36" (90cm)
53-43 £11.40 for 3 or £17.30 for 5

NIGRUM (MULTIBULBOSUM)

Greeny-black ovaries in the centre of each floret provide the reason for the name, though the suggestion of blackness in the name somehow does not sit so well on what is otherwise a creamy white flower! The flower head shape is less rounded and more flattened and they are easily grown in sunny well-drained soils with a dry summer rest.

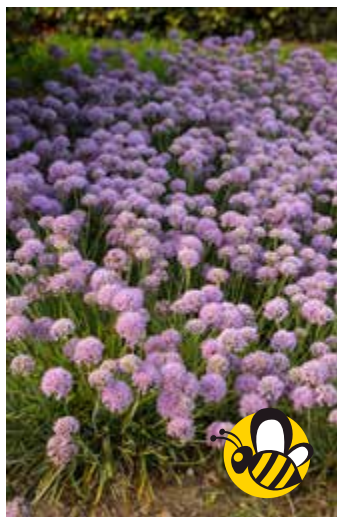
June 24" (60cm)
53-24 £5.00 for 5 or £9.00 for 10



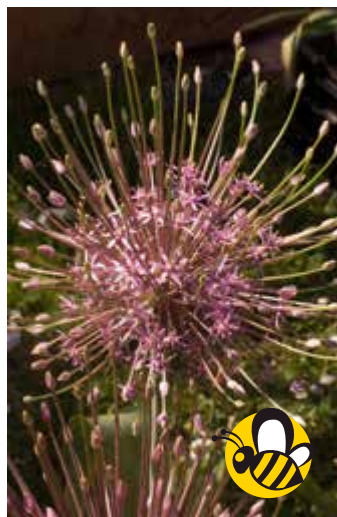
Add height with the
Allium Collection
on page 62

↔ = suggested plant spacing
in garden situations

Flowering time	Flowering height
Item Code	Price



Allium senescens glaucum



Allium schubertii



Allium obliquum



Allium Purple Rain



Allium Powder Puff



Allium nigrum Pink Jewel



Allium Pinball Wizard

NIGRUM PINK JEWEL

A pale pink form of the plant above, one which was much admired in the earlier Allium trials at RHS Wisley in 2014. Large domed pale pink heads with dark centres.

May/June
53-65

↔ 4-6" (10-15cm)
36" (90cm)
£4.50 each

OBLIQUUM

These are Siberian in origin so are incredibly tough despite being in leaf all winter. They never really seem to be fully dormant. Their flowers are the size of large hens' eggs in June when they eventually straighten from their crook like stature to stand erect, greenish-yellow in colour and increasingly 'fluffy'. They set lots of seed as well as forming clumps.

June
53-26

↔ 5" (12cm)
24" (60cm)
£10.50 for 3



**Insect friendly
Plants**

PINBALL WIZARD

Fully 6" (15 cm) across, these heads are not as densely packed with flowers as those of A. Globemaster, so the effect is rather more 'fluffy' but they are slightly taller with thick, weather resisting stems. The flowers are a mid purple and a bit earlier flowering than most, at their best in mid May.

May
53-61

↔ 12" (30cm) or more
40" (100 cm)
£14.00 for 3

POWDER PUFF

A broad leaved allium with violet purple flowers about the size of a tennis ball, held on much shorter stems than would normally be expected for an Allium with this size of head. It is a hybrid between A. nevskianum and A. sarawachanicum, both from Central Asia. Great for windy sites. The RHS trial reported on them that they "bulked up well, one of the best in the trial, great for patios or the front of the border".

May/June
53-66

↔ 4-6" (10-15cm)
15" (35cm)
£5.70 for 5

PURPLE RAIN

A product of the cross between A. Purple Sensation (from which it gains its height and deeper colouration) and A. cristophii (which gives it the open structure) with heads about 6" (15cm) across. With such popular and eminent parentage these should be superior and indeed they performed superbly well in the Allium trials at Wisley and were judged "the best in the trial".

June
(later than Purple Sensation)
53-67

↔ 6" (15cm)
34" (85cm)
£4.20 for 5, £7.50 for 10
or £14.00 for 20

SCHUBERTII

Spectacular and eccentric. Emerging early in the late winter these are at some risk in extreme winters but when planted in a warm sunny garden and given a dry warm summer rest after flowering they can be fabulous. Like a tumbleweed, the long spokes are what they might roll away on when dry, the seeds held on the shorter extensions. A vegetable explosion or firework caught mid burst!

June
53-31

↔ 15" (38cm) or more
18" (45cm)
£10.00 for 3

SENESCENS SSP. GLAUCUM

Low growing, quite tussocky plants with narrow twisted blue-green foliage. The lilac pompoms which are carried in profusion are adored by the insects. They need open sunny conditions. These are lifted as fresh dug divisions.

Summer
53-30

↔ 4" (10cm)
12" (30cm)
£6.50 for 3



Please the pollinators
with the **Allium**
Collection on page 62



Allium Violet Beauty



Allium tripedale



Allium uniflorum Eros



Allium sphaerocephalon



Allium sicutum



Allium tuberosum

SICULUM (NECTAROSCORDUM)
(Now officially in the Allium family)
Tall stemmed (with a pronounced keel – think of the seam in a pair of tights) leading upwards to dozens of hanging green and burgundy marked bells pendulously arranged in a loose head. They enjoy more shade than most true Alliums and seed about enthusiastically in conditions that they like and have strongly garlic scented foliage when crushed. The bees love them. The dry seed heads look like models of multi-turreted fairy castles.

↔ 3-4" (8-10cm)

Early summer 30" (75cm)
53-32 £4.50 for 5 or £8.00 for 10

SPHAEROCEPHALON
Butterflies love their egg shaped heads (and at their peak they are about the same size). They emerge as tight, deep green buds in June, turning purple from their tips through July and swaying in the summer breezes on long wiry stems. Woven through a summer border, often as rivers of colour, they visually 'tie things together'. Easy and inexpensive for the effect that they provide, just do plant enough of them for a generous display. We always supply bigger bulbs than are generally available, ensuring that the flowering will be better as a result. Plant them 3" (7cm) apart or 10-15 per square foot.

↔ 3-4" (8-10cm)

Summer 24" (60cm)
53-33 £6.80 for 15, £13.00 for 30 or £19.50 for 50

STIPITATUM VIOLET BEAUTY
A dusty violet colour with flowers 4" (10cm) in diameter, spherical except that the base is flattened. This one also did exceptionally well in the RHS Allium trial where its usefulness as a cut flower (it has a light fragrance) and its increase over the three years of the trial impressed the judges.

↔ 12" (30cm)

May/June 27" (70cm)
53-71 £4.50 for 5 or £8.00 for 10

TRIPEDALE (NECTAROSCORDUM)
Like A. sicutum above, but with more numerous flowers in a gorgeous soft pink, which emerge like hatchlings from their translucent sheath. Happy in sun or part shade and not as difficult to grow as the price may suggest, but uncommon and very select. Persistent and increasing in our heavy loam in some summer shade. How should one say the name? I am not sure, but hope that it should be 'tripi-dali' rather than 'tripe-dale'.

↔ 3-4" (8-10cm)

June 36" (100cm)
53-25 £6.50 or £18.00 for 3

TUBEROSUM
Treated as much a herb as a bulb (as are chives) but with a long flowering period through the summer, the white flowers displayed over lush foliage on very wiry stems which persist as dry straw-like markers through the winter. They are multifaceted plants, and brilliant insect feeding stations too.

↔ 4" (10cm)

Aug/Oct 24" (60cm)
53-38 £7.50 for 3 (small clumps)

UNIFOLIUM EROS
Shell pink heads of quite papery and long lasting flowers, about 15 contained within each head. Easy to grow in any sunny and well drained spot, especially the rockery. The small bulbs should be planted quite close together where their massed effect is very attractive.

↔ 2" (5cm)

May 10" (25cm)
53-40 £4.00 for 15

Need bigger quantities of our bulbs?

There are occasions when our pack sizes are unsuitable for bigger projects or large gardens. If this is the case do email us for a specific quotation for your requirements. We do not do a 'trade' list. You'll get the same quality of bulbs as all our retail customers.

↔ = suggested plant spacing in garden situations

Flowering time Flowering height
Item Code Price



ANEMONE

The Anemones mark that moment when the weather is on the turn for the better and the stronger light of spring is accentuated by the shiny wet foliage resulting from scudding showers (though these were seemingly absent in Somerset in 2021) and windy conditions. This is just what they love. They open wide in the sunshine though if the light is only dappled by dint of still bare branches on the trees they won't mind.

However they are not all alike even when 'resting': the bulbous (*A. blanda*) forms form hard, wizened corms, which need an overnight soak before planting and will take a long hot summer in their stride. The rhizomatous forms of wood anemone (*A. apennina* and *A. nemorosa*) need a cooler, shady (but also dry) rest after they have flowered, so they prefer more shaded, woodland-like conditions and, due to hating exposure to air, the rhizomes will be damp packed in coir when despatched by us.



Anemone apennina



Anemone blanda blue



Anemone blanda Pink Star



Anemone blanda White Splendour

APENNINA

An excellent and very pretty plant - I just wish it were more easily produced as I think it more attractive than *A. blanda* in British conditions, but it is not a similarly commercialised plant. In white or shades of blue with many deeply cut petals on flowers held well above soft mounds of leaves. Ideal under big deciduous trees following snowdrops and flowering with the early daffodils with which the colours combine very naturally. Plant the small stick-like rhizomes in small groups 6" (15cm) apart where they will thereafter seed about. I think our strimming - once a year in the summer has greatly increased their spread. Home grown and dug-to-order from under the trees here, the damp packed rhizomes are inevitably rather variable in size.

↔ clumps 6" (15cm)

March/April 8" (20cm)
57-11 £7.50 for 3



BLANDA BLUE

Low growing in shades of blue, that unconformity adding to their attractiveness, with flowers which shimmer close to the ground, unaffected by the March winds and shaking off the rain. Easy in any summer shaded spot where the more angled light (and moisture) of spring penetrate the canopy.

↔ 4" (10cm)
4" (10cm)

March 57-07 £2.60 for 10, £6.00 for 25
or £10.50 for 50



Plants we list which have received the RHS Commendation 'Award of Garden Merit' are now tagged with the trophy symbol. Space does not allow us to add the hardiness rating - please be aware the award applies to the ease of cultivation, excellence and constitution, but not necessarily hardiness.

BLANDA PINK STAR

Pale pink flowered plants of the same stature.

↔ 4" (10cm)
4" (10cm)
£3.80 for 5

March 57-08

BLANDA WHITE SPLENDOUR

Gleaming white petals surround a hub of golden stamens, which when ruffled by the wind, show off their pink-tinged backs. Opening widely in direct sunshine, their flowering is a sure sign that spring has arrived. Compared to the blue forms slightly warmer soils and more direct light suit them better, in too much shade they get rather leggy. They grow from larger hard, irregular corms, which you will receive whole - many providers sell these cut into smaller pieces.

↔ 4" (10cm)

March 57-12 5" (12cm)
£5.50 for 10, £12.50 for 25
or £23.00 for 50

Gardening Which? reported on a survey of Plant and Bulb suppliers in April 2021.

They surveyed just over 5000 of their members and needed a response rate of 30 to include a business in their ratings.

"Although this small, family-run bulb supplier didn't receive enough responses for star ratings in some of our survey categories, it makes it into the top bracket due to its customer satisfaction and recommendation score. Nine in 10 members who bought from Avon Bulbs would recommend it to others. Packaging, plant quality and value for money scored five, four and four stars respectively (out of five). The website is arranged by planting season with plants listed alphabetically and accompanied by large pictures. Avon Bulbs has also won 30 Chelsea Gold Medals."



Anemone nemorosa



Anemone bracteata



Anemone Lychette



Anemone virescens



Anemone ranunculoides

NEMOROSA

The wild wood anemone. The simplest looking low, white flowers which derive from stick-like rhizomes. For woodland situations, in shade with leafmold-rich soils. As with many 'wild' plants they often take a while to settle in and take off.

April
57-20

↔ 3" (8cm)
4" (10cm)
£4.40 for 5

NEMOROSA BRACTEATA

Double petalled in white with green tinges to the outermost ones. Like them all quite slow to get going but for a brief time in April a joy.

April
57-37

↔ 3" (8cm)
4" (10cm)
£5.50 for 5

NEMOROSA Lychette

Much larger flowered than the normal wood anemone but still in white with pronounced yellow stamens. Slightly later flowering. A lovely form.

April
57-23

↔ 3" (8cm)
4" (10cm)
£5.50 for 3

NEMOROSA VIRESCENS

For us the most productive of all the Anemone nemorosa forms. These do not have flowers in the conventional sense, but frothy green heads full of bracts that last much longer than flowers might.

April
57-17

↔ 3" (8cm)
4" (10cm)
£5.50 for 5

NEMOROSA WYATT'S PINK

Opening pale pink these have smaller more cupped flowers with darker pink backings.

April
57-39

↔ 3" (8cm)
4" (10cm)
£5.50 for 3

RANUNCULOIDES



A European native with bright yellow petalled flowers, the tubers underground are thicker and less stick-like than those of Anemone nemorosa. Easy in light spring shade conditions amongst the other March and April flowering woodlanders.

April
57-31

↔ 3" (8cm)
4" (10cm)
£5.50 for 5

RANUNCULOIDES FUCHSIA TRAU

With longer internodes this form is taller and less compact than A. ranunculoides with small pretty double yellow flowers.

April
57-40

↔ 3" (8cm)
4" (10cm)
£5.50 for 3

↔ = suggested plant spacing
in garden situations

Flowering time	Flowering height
Item Code	Price



Anthericum x Paradisea



Anthericum liliago major



Anthericum ramosum



Asphodelus albus

ANTHERICUM

LILIAO MAJOR



Pretty white flowered perennials from southern Europe. They grow from an agapanthus-like crown of thick fleshy roots when dormant in the autumn, providing for splendid, informal looking plants that thrive in moisture retentive soil in good light. When settled, each plant will carry ten or sometimes twenty flower stems piercing upward each carrying a dozen or more flowers looking like little flared trumpets with yellow stamens, opening sequentially up the stems. Border plants for good fertile soils in the sun. Plant the crowns 4" deep and 24" (60cm) apart.

May
58-05

↔ 24" (60cm)
24" (60cm)
£8.00 each

ANTHERICUM X PARADISEA

We have grown both Anthericum liliago major and Paradisea lusitanica for a long while and they do not really overlap in their flowering but have some similarities. We believe them to have spontaneously spawned an inter-generic hybrid as these flower after one and before the other, are much bigger and later than the Anthericum but earlier and smaller than the Paradisea. If you like the group - and who wouldn't, they are easy, attractive and increasing - maybe you would like to give a division of this (presumed) hybrid a go, and if you are an expert let us have your views?

May/June
58-06

24" (60cm)
24-36" (60-90cm)
£8.00 each

ANTHERICUM RAMOSUM

The 'Branched St Bernard's Lily', produces many wiry stems with spangled stary white flowers, never many open at once but always with a few open over several months. An easy to grow perennial for a sunny spot. Pot grown plants.

May/June
158-07

↔ 14" (35cm)
24" (60cm)
£7.50 or £20.00 for 3

ARISTOLOCHIA

ROTUNDA

Originally found in southern Europe and parts of the plant were used to induce childbirth evidently and the very rare and beautiful Southern Festoon butterfly (again from southern Europe) lays its larvae on the plant making the adult butterfly poisonous to birds. Unlikely to satisfy either of those needs in Britain, this is a bit of a trial as we are unsure as to how many tubers we shall harvest after years of trying! Rather few possibly! A slightly odd little curiosity which seems perfectly hardy, creeping with rounded, clasping leaves and small aroid-like flowers.

June
196-01

9" (20cm)
£7.50



Aristolochia rotunda



Bomarea salsilla

ASPHODELUS

ALBUS

Quite remarkable plants that provide structure and an architectural framework surprisingly quickly from autumn planted 'roots'. The strong stems carry white stary flowers in a spire, each looking as though they have been henna lined. Best in open conditions and more gravelly well drained soils. These will be big roots and are priced as such on account of the likely difficulty in digging and packing them.

Spring/Summer
34-05

12" (30cm)
3-5' (90-150cm)
£15.00

BOMAREA

SALSILLA

Mexican and South American climbers that one might imagine require protection from severe cold, but recent winters here have left them untouched, buried as they are deep in the ground. Long lasting pink flowers crowd on the ends of thick, tangled stems with quite succulent foliage, sometimes the heads look down, or up, but never the same way! They seem happy with either full sun or part shade but you will need to provide support for them to climb through.

Summer flowering
10-04

30" (70cm)
£6.00



Bongardia chrysogonum



Brodiaea Babylon

BONGARDIA

CHRYSOGONUM

A rare bulb with coppery yellow flowers and attractive grey-green leaves marked with red, best suited to somewhere sun-baked and dry in the summer. As well as being fully hardy they are also hugely drought resistant and love a hot dry soil. Very special members of the Berberis family with pretty, textured, nut-like tubers.

April/May
67-04

6" (15cm)
9" (22cm)
£5.50 each

BRODIAEA

BABYLON

Western American in origin, related to Triteleia and Dichelostemma. These are wiry stemmed with what are initially upward facing purple trumpet shaped flowers with white stamens, as they are they open to a more starry shape. Very pretty and good cut flower. They will need soils that do not waterlog and better in well drained and sunny conditions.

April/May
61-01

2-3" (5-8cm)
24" (60cm)
£4.00 for 3



CAMASSIA

Very hardy bulbs of North American origin that love that heavy, often rather poorly drained soil that many other bulbs find too tough to cope with. If your soil is too heavy and the summers too wet to get repeat flowering from your Tulips some of these might be a suitable (and more sustainable) alternative, albeit with a narrower colour palette? Suitable for borders or in grassland where one could achieve a full six weeks of interest using a few different varieties.



Camassia leichtlinii alba



Camassia leichtlinii caerulea



Camassia Maybelle

LEICHTLINII ALBA

Ivory-cream in flower, standing out brilliantly against any dark backdrop and a good contrast plant for the last of the Alliums in May. They spread their seed around freely, and in time sow themselves through the herbaceous border in good cottage garden style. They do not naturally form as big a bulb as the blue C. caerulea and often flower from small juvenile bulbs, ideally planted about 6" (15 cm) apart. These generally flower about 10-14 days later than the 'standard' blue form of C. 'caerulea'.

May/June
70-07

↔ 5-6" (12-15cm)
36" (90cm)
£5.50 for 3 or £15.00 for 9

LEICHTLINII CAERULEA

Especially valuable for being happy in heavier soils and a feature plant for the border in late spring where they make magnificent shows with many erect stems of deep lavender blue flowers, curving skyward from thick clumps when established. They set no seed, increasing as the bulbs split up. Longer lasting flowers result from planting them in some shade and they love clay soils that hold the moisture. Ideal partners might be Polygonatum x hybridum, Maianthemum racemosum or Tellima grandiflora. We supply big bulbs that should be planted with 5" of soil over them, 9" (22cm) apart.

April/May
70-06

↔ 9" (23cm)
32" (80cm)
£10.00 for 5 or £18.00 for 10

LEICHTLINII CAERULEA

MAYBELLE

These flower two or three weeks later than the C. l. caerulea (above), are much shorter and more compact and the flower colour more blue, less purple. Mid-late May can be a time when one is noticeably short of colour in the garden so these really fill a gap and extend the Camassia display. Being shorter they will also suit more exposed sites?

May
70-16

↔ 9" (23cm)
24" (60cm)
£10.00 for 5 or £18.00 for 10

↔ = suggested plant spacing in garden situations		
Flowering time	Flowering height	Price
Item Code		



Plants we list which have received the RHS Commendation 'Award of Garden Merit' are now tagged with the trophy symbol. Space does not allow us to add the hardiness rating – please be aware the award applies to the ease of cultivation, excellence and constitution, but not necessarily hardiness.



Camassia quamash (esculenta)



Camassia leichtlinii semi plena



Camassia Avon's Stellar hybrids



Camassia Electra



Camassia leichtlinii Sacajawea

LEICHTLINII AVON'S STELLAR HYBRIDS

A seed raised form, these are the result of hybridisation and selection work done here. The plants exhibit widely varying colours, combinations of purple blue, mauve, greyish, purplish, green and pale pink. We cannot guarantee what you might receive, it is 'pot luck' but many are individually eye-catching and from the seed that they in turn freely produce, who knows what you might raise yourself! The bulbs also vary somewhat in size.

↔ 9" (23cm)

May 36" (90cm) - colours will vary
70-11 £9.00 for 3

LEICHTLINII ELECTRA

Large headed with the green bracts giving way to powder blue - lilac flowers. The individual flowers are huge and they form magnificent clumps by gradual division of the big bulbs. They set no seed. Originally, many years ago, the stock came from Beth Chatto's garden. None sold last year to rest the stock, still only available in limited numbers.

↔ 9-12" (23-30cm)

April/May 30" (75cm)
70-10 £8.00

LEICHTLINII SACAJAWEA

Carrying cream coloured flowers these are a variegated form with a bold cream coloured edge to the leaf in the spring before they flower, this nicely accentuates what is (in Camassia generally) not very interesting foliage. The name honours a native American Indian woman who saved the starving explorers on the Lewis and Clark expedition of 1805 as they crossed America east to west (and back again) for the first time, feeding them the native 'quamash' bulbs. Again 10-14 days later into flower than C. caerulea.

↔ 9" (23cm)

May/June 36" (90cm)
70-15 £10.00 for 5

LEICHTLINII SEMI-PLENA

A tall tower of full petalled, almost fluffy looking, cream coloured flowers. A sterile form of the cream flowered plant that is the species: C. leichtlinii alba. But the benefit of sterility for gardeners is a longer flowering season. They grow better where they receive more sun than shade and are better still where the soils are damp all through spring and early summer.

↔ 6-9" (12-23cm)

June 36" (90cm)
70-08 £8.50 for 3



Cardamine heptaphyllum



Chaerophyllum hirsutum roseum

QUAMASH (ESCULENTA)

The shortest of all the Camassia, suitable for naturalizing in rough, very late mown grass, or to dot in groups informally in the borders. Much smaller bulbed than all the forms above, these give rise to rich, dark purple-blue flowers with startling yellow stamens. A true meadow plant. The bulbs are often pitted and marked when dormant, though this seems to make no difference to their growth, plant them 3-4" (10cm) apart.

↔ 3-4" (8-10cm)

May/June 12" (30cm)
70-05 £3.50 for 10,
£8.00 for 25 or £15.00 for 50

CARDAMINE HEPTAPHYLLUM

A large white flowered form of the Lady's smock, or Milkweed which prefers to grow in shaded conditions. A perennial supplied as divisions.

↔ 9" (20cm)

April/May 24" (60cm)
89-04 £6.50 each

CHAEROPHYLLUM

HIRSUTUM ROSEUM

The Hairy Chervil. A relative of the cow parsley with deep roots and a branching habit supporting deeply divided leaves and in the late spring and early summer masses of stems with flattened heads of lilac-pink flowers. For sun or part shade in heavier soils and totally hardy. Field dug plants which will probably have untidy and large roots.

↔ 20" (50cm)

May/June 24" (60cm)
197-01 £8.50 each

↔ = suggested plant spacing
in garden situations

Flowering time Flowering height
Item Code Price



Convallaria Fernwood's Golden Slippers



Convallaria. Hofheim



Convallaria Hardwick Hall



Convallaria rosea



Convallaria Fortin's Giant



Convallaria Bordeaux

CONVALLARIA

Lilies of the Valley. Spring flowering plants of woodland origins with stringy rhizomes under the soil. They like humus rich soil and part shade but everyone's experience of growing these is different and (as is reported to us) they will grow in the most unlikely places. But the critical commonality is that they do need patience to begin with and tales of them taking 2 or 3 years to settle in abound. They are all about 6" (15cm) tall when in flower in May.

MAJALIS BORDEAUX

Bigger flowered than the ordinary forms with what are supposed to be darker leaves - but grown here in different conditions that is hard to verify. It has bulked up well from the small patch we started with.

75-13

↔ 4" (10cm)
£9.50 for 3

Flowering time	Flowering height
Item Code	Price

MAJALIS FORTIN'S GIANT

Larger flowered and taller than the 'common' white Lily of the Valley but equally scented. For sun or shade but in the former they need a more moisture retentive soil. Good, strong, fresh-dug rhizomes (stringy roots) to plant horizontally about 2" deep (5 cm) and twice that apart.

75-05

↔ 4" (10cm)
£4.80 for 5

MAJALIS HARDWICK HALL

Wide leaved with an irregular creamy coloured margin to the leaf, providing an aspect of interest even when not in flower. The flowers are large, white and scented.

75-09

↔ 4" (10cm)
£9.50 for 3



MAJALIS HOFHEIM

A creamy yellow edge to the otherwise plain green leaf marks these out, these marginal highlights are considered rather stronger in this form than it is in C. Hardwick Hall, the flower is creamy white and scented.

75-12

↔ 4" (10cm)
£9.50 for 3

MAJALIS FERNWOOD'S GOLDEN SLIPPERS

A startlingly golden leaved form, particularly in the early spring before the flowers appear. They appear perfectly stable as there has been no reversion to green. There is an ongoing argument regarding the name, should it be Fernwood, Fernwood or what? We obtained the initial stock from the late Stephen Taffler (inveterate variegated plant addict) who lived nearby.

75-11

↔ 4" (10cm)
£9.50 for 3

MAJALIS ROSEA

Like small and very exclusive pink pearls, a vigorous form which we know to be tough and productive with lovely pale pink fragrant flowers. Best in dappled light or part shade as direct bright sunshine tends to burn out the pink. As with any Convallaria you'll need a degree of patience before they thicken up.

75-07

↔ 4" (10cm)
£9.50 for 5



Plants we list which have received the RHS Commendation 'Award of Garden Merit' are now tagged with the trophy symbol. Space does not allow us to add the hardiness rating - please be aware the award applies to the ease of cultivation, excellence and constitution, but not necessarily hardiness.



Corydalis Blue Panda



Corydalis China Blue



Corydalis Blue Dragon



Crocus Blue Pearl



Crocus Ard Shenk



Crocus Cream Beauty

CORYDALIS

A family with snapdragon like flowers of which we sell pot grown several of the 'flexuosa' forms. These do not derive from a true bulb so are supplied as growing plants in small pots ready to plant out. These need 'encouragement' to grow away from the compost in which they will be established, tease out the roots a bit, break up the pot shaped root ball and firm them in to your soil so that they root across that boundary.

FLEXUOSA BLUE DRAGON

Bronze purple foliage, its colour heightened when planted in some direct sunshine, particularly in the early spring, with deep purple-blue flowers. Sold by the potful.

↔ 8" (20cm)
6" (15cm)
Spring/Summer
76-12 £3.50

FLEXUOSA BLUE PANDA

The foliage shows red markings on the mainly deep green leaves with reddish stems and deep purple-blue flowers. Sold by the potful.

↔ 8" (20cm)
6" (15cm)
Spring/Summer
76-24 £3.50

FLEXUOSA CHINA BLUE

Exhibiting beautiful pink-fringed juvenile foliage when planted in some sunshine and startling pale blue flowers, this still remains a 'buy on sight' plant. Sold by the potful.

↔ 8" (20cm)
6" (15cm)
Spring/Summer
76-22 £3.50



Insect friendly Plants

↔ = suggested plant spacing in garden situations

Flowering time Flowering height
Item Code Price

CROCUS SPRING FLOWERING

The *C. tommasinianus* forms are perfect for planting in light grass or borders, self-sowing and increasing where happy and potentially spreading everywhere. The bees love them and their opening is always a certain sign of spring arriving. The hybrid forms of the species *C. chrysanthus* have been raised for garden use but need more particular situations than do the 'tommies'. They are palatable to mice and squirrels as are some other small carbohydrate rich bulbs. Mesh baskets (as offered on page 58 of this catalogue) are a great help (with the addition of a home-made wire lid). These buried containers mostly thwart those opportunistic raiders. The bigger and later flowering *C. vernus* or 'Dutch' forms of *Crocus* are much bigger bulbed (so can be planted more deeply) and seem to both persist better and are less affected by rodents.

CHRYSANTHUS ARD SCHENK

Very early flowering with pure white petals marked by a yellow throat inside. Glistening in the early sunlight.

↔ 1.5" (3cm)
78-72 £4.80 for 20 or £10.50 for 50

CHRYSANTHUS BLUE PEARL

A lovely goblet shaped flower with a soft lavender-blue exterior, pale silvery blue inside, and bronzing at the base.

↔ 1.5cm (3cm)
78-12 £4.80 for 20 or £10.50 for 50

CHRYSANTHUS CREAM BEAUTY

Elegant, with pale-cream petals brushed with charcoal on the reverse and bright orange stigmas when open wide in the sun.

↔ 1.5cm (3cm)
78-14 £4.80 for 20 or £10.50 for 50



Crocus Dorothy



Crocus Harry Hay



Crocus Prins Claus



Crocus Yalta



Crocus minimus Spring Beauty



Crocus t. Ruby Giant



Crocus t. Whitewell Purple

CHRYSANTHUS DOROTHY

Bronzy yellow throughout, the open flowers mirroring the sun with a shiny sheen. Bright and cheery.

↔ 1.5" (3cm)

78-69 £4.80 for 20 or £10.50 for 50

CHRYSANTHUS PRINS CLAUS

A slightly bigger two-tone flower with ivory white within and a smoky purple blue reverse to the petal. Grouped together each petal seems to frame their neighbour and so they show themselves off magically.

↔ 1.5" (3cm)

78-70 £4.80 for 20 or £10.50 for 50

MINIMUS SPRING BEAUTY

Lovely lilac petals open wide in the sun, but notice their backs, richly feathered along their length on a much paler background they really enhance that lilac.

↔ 1.5" (3cm)

78-59 £4.80 for 20 or £10.50 for 50

TOMMASINIANUS RUBY GIANT

Deep pinkish-silvery purple flowered with contrasting yellow anthers. Excellent for naturalising and an ideal accompaniment to the early dwarf daffodils and to follow the Cyclamen coum. Don't be deceived by the deceptive naming, they are neither Ruby coloured nor Giant, just 'chubbier' and a bit darker than Whitewell Purple below.

↔ 2" (5cm)

78-44 £4.40 for 20, £10.00 for 50 or £18.00 for 100

TOMMASINIANUS WHITEWELL PURPLE

Free-flowering with silvery mauve-pink flowers and bright yellow anthers, this form is a little finer and paler in hue. They are ideal to plant with the intention of allowing them to seed about and naturalise. They don't last long in blazing March sunshine so try them in dappled shade. If they are planted in grass don't mow till the leaves have gone and, if you remember, look out for the seed-heads at soil level in June.

↔ 2" (5cm)

78-45 £4.40 for 20, £10.00 for 50 or £18.00 for 100

TOMMASINIANUS YALTA

A hybrid between a 'tommy' and a large hybrid, perhaps C. vernus Vanguard so a bit larger and slightly later flowering. Some left over bulbs have survived in some rough grass under a birch and done quite well here so come recommended. Our heavier soil generally does not suit the smaller crocus, though the 'tommies' do brilliantly. Alternating deep purple and silvery backed petals contrast nicely.

↔ 2" (5cm)

78-64 £5.50 for 10 or £12.50 for 25



See our **Crocus vernus Collection** on page 62

(VERNUS) HEUFFELIANUS HARRY HAY

A purple tipped selection of a species that grows in the mountain chains of eastern Europe, described in the March 2020 edition of the RHS Plant Review and named after a generous and great plantsman from near Reigate. It has been found to be robust in cultivation but is only available in very limited numbers.

↔ 2" (5cm)

78-74 £9.00 for 3

CROCUS VERNUS

'DUTCH' HYBRIDS

Selected over the centuries, originally from *C. vernus* (which are wild plants of the mountains of Eastern Europe) these are useful for planting in grassed areas to provide an early spring show (though in February and March the grass will hardly be growing) and being bigger bulbed they can be planted more deeply and would cope with rougher grass cover than lawn grasses imply. Each corm produces multiple flowers. Flowering into the early Daffodil season they can be an effective companion to the sea of yellow in the March garden. Plant them 3" (8cm) apart, or roughly 7-12 per square foot. They do not quite all flower together (which is a benefit) so choose a few varieties to provide a slightly greater spread of flowering. Late February and early March flowering 5" (12cm) tall. This picture is of some now naturalised in the copse.



Crocus Pickwick



Crocus Jeanne D'Arc



Crocus vernus Flower Record



Crocus vernus Golden yellow



Crocus vernus Remembrance



Crocus Queen of the Blues

FLOWER RECORD

The deepest purple form, providing that darker contrast in a mixed planting.

↔ 3" (8cm)

78-71 £7.40 for 15, £13.50 for 30 or £20.50 for 50

GOLDEN YELLOW

Bright golden yellow. Either use them alone or in combination with the purple forms (it flowers fractionally earlier). It has been found not to be a true *C. vernus* form at all but a triploid hybrid between *C. vernus* and *C. angustifolius*.

↔ 3" (8cm)

78-52 £7.40 for 15, £13.50 for 30 or £20.50 for 50

JEANNE D'ARC

A superb goblet shaped white crocus (occasionally with purple flecking) with strong stems. Great planted alone or else supporting a mix of other colours. But also nice with late snowdrops or as a foil to any of the Greigii tulips which flower at the same time. You could try combining some of the 'Dutch' crocus with any Greigii tulip in your own pots?

↔ 3" (8cm)

78-51 £7.40 for 15, £13.50 for 30 or £20.50 for 50

PICKWICK

Strongly striped and feathered in violet over a white background. A larger flowered and vigorous crocus, generally with several flowers per corm.

↔ 3" (8cm)

78-53 £7.40 for 15, £13.50 for 30 or £20.50 for 50

QUEEN OF THE BLUES

Lavender blue, with a whiff of purple in some lights but with an incredible depth of colour and slightly shorter stemmed.

↔ 3" (8cm)

78-68 £7.40 for 15, £13.50 for 30 or £20.50 for 50

REMEMBRANCE

The deep purple blue, and again slightly shorter stemmed. Brought back into our list by popular demand with memorials in mind.

↔ 3" (8cm)

78-63 £7.40 for 15, £13.50 for 30 or £20.50 for 50



Insect friendly Plants



Cypripedium Gisela



Dichelostemma Pink Diamond



Disporopsis pernyi



Dichelostemma ida maia



Dichelostemma congestum



Disporum flavum

CYPRIPEDIUM

Hardy orchids that are perfect for shade in summer but reasonably good light in the spring. They do not need cossetting, in fact unless they experience a cold spell they do not form as many flower spikes. If yours is a very slug affected garden then they can spoil these, but they are well worth the effort!

GISELA

With Slipper Orchid-like flowers these seem a bit exotic but they, and now many hybrids like them are welcomed for their late spring flourish.

↔ 18" (45cm)
May/June 18" (45cm)
64-07 £18.00



Plants we list which have received the RHS Commendation 'Award of Garden Merit' are now tagged with the trophy symbol. Space does

not allow us to add the hardiness rating – please be aware the award applies to the ease of cultivation, excellence and constitution, but not necessarily hardiness.

DICHELOSTEMMA

Allium-like bulbs of North West America with some nice stories to go with them. They are obviously very unusual plants to be found in UK gardens but they are hardy and tough enough to grow in lighter and more free draining soils. They grow much as any Allium but flower later. The sap from cut stems can be caustic to the skin.

CONGESTUM

From the far west of America, producing a compact, hen's egg sized flowerhead much like an Allium, formed of very long-lasting lilac-purple flowers, on a slender but very wiry stem. They will grow where one would expect Alliums to thrive.

↔ 2-3" (5-8cm)
June 24" (60cm)
82-04 £4.00 for 5 or £7.00 for 10

IDA-MAIA

Spectacular red, yellow and green coloured flowers, shaped like cigars, opening at the tip of a wiry stem. Named after the daughter of a Californian stage coach-driver and pollinated (in the wild) by humming-birds! Grown much as any Allium.

↔ 2-3" (5-8cm)
June 18" (45cm)
82-05 £4.00 for 5 or £7.00 for 10

PINK DIAMOND

A naturally occurring sport of D. ida-maia with bright pink flowers with white tips.

↔ 2-3" (5-8cm)
June 18" (45cm)
82-06 £4.00 for 5 or £7.00 for 10

DISPOROPSIS

Similar to the Solomon's Seal in that the flowers emerge at the leaf axils along the stem, and are also shade lovers, however these are scented, the Solomon Seals are not. They are very hardy plants of the Far East.

PERNYI

These carry waxy perfumed white bells, often in pairs up the speckled stems. The foliage is nearly evergreen and we cut out all the stems from the past year in the late spring in order to tidy up the growing clumps.

↔ 12" (30cm)
May/June 18" (45cm)
36-04 £6.50 for 3

DISPORUM

UNIFLORUM (FLAVENS)

Solomon's Seal-like plants (again!) with soft yellow tubular flowers at the ends of their tall, erect stems in the spring. Korean in origin they are not very well known but understated plants for shade.

↔ 12" (30cm)
June 18-24" (45-60cm)
30-06 £7.50

↔ = suggested plant spacing in garden situations

Flowering time	Flowering height
Item Code	Price



ERYTHRONIUM

There is only one European form of Dog's Tooth Violet (that common name referring to the shape of the bulb); the others are all American species or hybrids where the common name for them is the Trout Lily (due to the beautifully mottled markings on the leaves). They grow best where they have cool humus rich soil conditions in the spring, usually in dappled shade, with a drier resting phase in what will by then be deeper shade in the summer. They all have interesting leaves and look great with Dicentra, Trilliums, Epimedium and the wood Anemones. Knightshayes Court, or The Garden House at Buckland Monachorum, both have good displays.



Erythronium dens canis

DENS CANIS

The European Dogs Tooth Violet with magically mottled leaves, often with brown and purple markings. The flowers are pale pink through to lilac or purple. They benefit from good spring light but ideally with shade from about April. Plant them 3-4" (7-10cm) apart.

March
84-08

↔ 3-4" (8-10cm)
4" (10cm)
£6.00 for 3



Erythronium dens canis Old Aberdeen

DENS CANIS OLD ABERDEEN

Noted for their exceptionally dark leaf markings the flowers are also more deeply coloured than the standard E. dens canis. First named (I believe) by Carol Scott whom I met and stayed with 30 plus years ago near Glasgow. They should increase quite rapidly but none of the E. dens canis is ever in flower for long, especially if it is warm, so great foliage is a strong reason to grow these.

March
84-09

↔ 3-4" (8-10cm)
4" (10cm)
£4.20 or £11.50 for 3



Erythronium Snowflake

DENS CANIS SNOWFLAKE

A white flowered selection, worth a closer look when in flower (though this can be awkward as they are very close to the ground) in order to admire the extraordinary mauve-purple stamens.

March
84-11

↔ 3-4" (8-10cm)
4" (10cm)
£4.50



Erythronium Pagoda

PAGODA

A more vigorous hybrid first discovered in the late 19th Century, it is a bigger plant altogether, with creamy yellow flowers. They are easier to grow than any of the others and one starts with a big finger sized tuber. Ideally planted in some shelter from spring gales (the large leaves tend to crack in strong winds) and ideally in humus rich soils where they will clump up.

April
84-17

↔ 5-7" (12-18cm)
12" (30cm)
£5.00 for 3 or £10.50 for 7



Erythronium revolutum



Erythronium revolutum Knightshayes Pink



Erythronium tuolumnense



Erythronium White Beauty

REVOLUTUM

A reddish-pink flowered Erythronium, originally from the western seaboard of North America, right through from California to Vancouver. Now they are a welcome highlight in woodland gardens here too. More subtle and refined than E. Pagoda, but if you can grow that one (and most can) then these are a definite possibility. They seed around quite vigorously and mix in very naturally with wood anemones, Anemone apennina, and all those low growing gems of April. A cool damp April is a blessing, otherwise they are too quickly over. Some will be marked with lovely brown flecks on the leaves.

April
84-21

↔ 5-7" (12-18cm)
10" (25cm)
£12.50 for 3

REVOLUTUM KNIGHTSHAYES PINK

Named after the garden in which these abound in Devon, this strain has even more heavily marked leaves with pale pink flowers, but do handle the tubers carefully, they are long and brittle.

April
84-13

↔ 5-7" (12-18cm)
10" (25cm)
£17.50 for 3

TUOLUMNENSE

Tall, early flowering plants with larger bright plain green leaves and bright yellow flowers. A native of the Sierra Nevada in California they are perfectly hardy in the UK. Pagoda is a hybrid deriving from this species, it is later and paler flowered, has more marked leaves, and is quicker to increase.

April
84-24

↔ 5-7" (12-18cm)
8" (20cm)
£4.50

WHITE BEAUTY



Probably the best Erythronium in Britain for more formal small gardens and an undoubted favourite - if you have visited Knightshayes in Devon in early April you'll know why. A very neat and compact hybrid with mottled leaves and creamy white flowers, often multi-stemmed on established plants. The whole plant is nicely proportioned. Pamper them with deep leaf mould rich soils in the summer shade of trees or shrubs. Plant 5" (12cm) apart.

April
84-15

↔ 5" (12cm)
10" (25cm)
£6.50 or £17.00 for 3

↔ = suggested plant spacing
in garden situations

Flowering time	Flowering height
Item Code	Price

FRITILLARIA

The plants listed below are illustrative of the amazing diversity of the family, from small bulbs of moist riverine meadows to giants of near desert like locations. Sadly rather few of the many species of *Fritillaria* are well suited to 'ordinary' garden conditions in Britain but, if you can invest some effort into their planting and exercise judgment in where to plant them, the following are to be particularly recommended. Our website does provide more detail on all of them.



GAP Images



Fritillaria elwesii



Fritillaria acmopetala



Fritillaria imperialis lutea



Fritillaria meleagris

GAP Images

ACMOPETALA



A native of the Eastern Mediterranean with one or more hanging jade green bell-shaped flowers characteristically turned back (reflexed) at the tip, with chocolate brown markings. Grow them in a little shade in fairly well-drained conditions, out of the strongest wind.

↔ 4" (10cm)
12" (30cm)

April/May
85-04 £6.50 for 3 or £10.00 for 5

ELWESII

Dark stemmed with narrow, more tubular, slate and green flowers covered in a fine bloom held atop a fine stem. They hail from southern Turkey and will happily survive our cold winters, but would do better for a dry summer rest, so that calls for better drained soils.

↔ 4" (10cm)
15" (35cm)
£8.50 for 3

April
85-07

IMPERIALIS WILLIAM REX



Deeply coloured orange-red flowers which surround a strong dark stem. A selected form of the Crown Imperial Lily. A top knot of green leaves above the flower makes them look quite exotic. For rich sunny soils, ideally damp in the spring but dry in summer, sheltered from too much wind and planted 6-8" (15-20cm) deep.

↔ 12" (30cm) or more
30" (75cm)

April
85-20 £9.00 or £25.00 for 3

IMPERIALIS LUTEA

Bright yellow flowered on a pale green stem, no more difficult to grow than the red flowered form. Both grow very rapidly in the early spring and needing to quickly replenish that effort, we suggest that they benefit from liquid feeding whilst in growth to encourage flowering in subsequent years.

↔ 12" (30cm) or more
36" (90cm)

April
85-21 £9.00 or £25.00 for 3

MELEAGRIS



The ever popular Snakeshead Fritillary. Serpent like with darkly chequered nodding bells, a smattering of which may be paler or even white. In Elizabethan times it was widespread – typically in damp, grassy, late-cut meadows and in moist alluvial soils. So, with that in mind, aim for these conditions to have them increasing and self-seeding yourself. They are best ordered early to allow for timely planting. Plant 4" (10cm) deep in drifts, 4" (10cm) apart (10-15 per sq ft.)

↔ 4" (10cm)
12" (30cm)
£6.50 for 15
or £18.50 for 50

March/April
85-27



Fritillaria William Rex



Fritillaria pallidiflora



Fritillaria pontica



Fritillaria raddeana



Fritillaria michailovskyi



Fritillaria persica alba



Fritillaria persica

MICHAILOVSKYI

A striking small plant with a yellow band around the rim of the chunky, reddish brown, bell shaped flower. These need a well drained soil to persist in the ground, otherwise growing them in a pot in the protection of something such as a bulb frame to keep them drier, particularly in summer, is advisable.

↔ 4" (10cm)

March/April 8" (20cm)
85-31 £3.50 for 3

PALLIDIFLORA



Pale straw green bells, speckled with darker flecking within the bell. Usually the broad leaves and relatively large flowers act as a sail and the stems become more S shaped. This actually helps to see inside the flower! None too difficult and charming in a raised bed or in well drained soils.

↔ 5-6" (12-15cm)

April 12" (30cm)
85-36 £5.50

PERSICA

We grew these with ease and to great proportions 30 years ago on the limestone brash at Bradford on Avon. That indicated their surprising preference for good light, and good drainage. Our heavier soils here seem to suit them less well, but they are impressive all the same with towers of black grape like flowers with a similar bloom.

↔ 12" (30cm)

April/May 24-30" (60-75cm)
85-37 £9.00 or £25.00 for 3

PERSICA ALBA

A form in which the dusky black flowers have lost their pigmentation and instead are a fresh matt green. Huge bulbs.

↔ 12" (30cm)

April/May 24-30" (60-75cm)
85-43 £15.00 each

PONTICA



Bell shaped flowers (showing none of the flared lip that you see in *F. acmopetala*) with green and brown markings. Shorter too, suited to a bit more shade, seeding freely where happy.

↔ 4" (10cm)

April/May 9" (25cm)
85-39 £6.50 for 3

RADDEANA

Closely related to the Crown Imperials but rather shorter in yellowish green. They tend to root early in the autumn and then emerge equally early and race up to flower quickly. They too prefer a bit of shelter from the wind and good light, though are very cold tolerant.

↔ 8-10" (20-25cm)

Mar/April 18" (45cm)
85-41 £12.00



Plants we list which have received the RHS Commendation 'Award of Garden Merit' are now tagged with the trophy symbol. Space does not allow us to add the hardiness rating – please be aware the award applies to the ease of cultivation, excellence and constitution, but not necessarily hardiness.

↔ = suggested plant spacing
in garden situations

Flowering time Flowering height
Item Code Price



Gladiolus Atom



Gladiolus Nathalie



Gladiolus Nymph



Gladiolus The Bride

GLADIOLUS

BYZANTINUS



Rich magenta coloured flowers with white flashes. These are free flowering plants with large strongly coloured flowers, and generally infertile as the plant is tetraploid. They are lovely, persisting colourful cottage garden plants for the early summer, but the leaves do emerge early in the year and in very cold gardens (or in the north) they may need a mulch over winter. There is skulduggery about regarding what is sold under this name. A poor relation to what we sell is *G. byzantinus* ssp. *communis* which is often passed off as the same plant and is a good deal cheaper. The two are like chalk and cheese. For sun or slight shade. Plant 4" (10cm) apart.

June 88-04 **Unavailable presently, but maybe check on our website in the autumn**

The 'named' dwarf gladioli flower in the early summer. Short enough not to need staking, they do not tower over the garden as do the larger forms (those preferred by Dame Edna). These make particularly good cut flowers too. They grow away early, and this may result in the foliage being susceptible to severe late frost, so mulching is a possible requirement in very cold gardens. Plant them in a sheltered site in well-drained soil, 6" (15cm) deep, 4" (10cm) apart on a bed of sharp sand. The winter dormant hybrid forms are also sold in the spring, if yours is a cold garden buy them then instead.

ATOM

Dusty orange-red flowers, each petal margin enriched by white piping, which highlights their individual shape. This is particularly effective where the petals overlap one another. Best in well drained soils and in the sun.

July 88-18 **£7.00 for 10 or £13.00 for 20**

↔ 4" (10cm) 30" (75cm)

NATHALIE

Predominantly pink flowered with the bottom petals on each marked with a darker rose and cream coloured flash, pretty and easy to fit into the summer colour theme.

July 88-19 **£7.00 for 10 or £13.00 for 20**

↔ 4" (10cm) 30" (75cm)

NYPH

White flowered, but clearly marked with luscious pink and purple lipstick kisses on the lower petals. Much less formally upright, the bigger flowers bending the stems this way and that, so they weave through surrounding plants with an appealing informality.

May/June 88-11 **£7.00 for 10 or £13.00 for 20**

↔ 4" (10cm) 24" (60cm)

THE BRIDE

Starry, tapered, gleaming white flowers tinged with green at the throat, a strong-growing favourite of ours and our customers. Do ensure that the soil is well drained and if you have failed before, try them again planted in deep pots protected from the worst of the cold till spring and then plant these out into your sunny border.

June 88-06 **£7.00 for 10 or £13.00 for 20**

↔ 4" (10cm) 18" (45cm)



Hacquetia epipactis



Hyacinthoides non scripta

HACQUETIA

An unusual European native of woodland conditions in the Carrot family. The Plantfinder has them under Sanicula, we are yet to get that embedded so they stay here for the moment!

EPIPACTIS



Flowering fairly early in the year with many yellow starry florets surrounded by all-green bracts that last longer still. The leaves only properly emerge later in the spring. Always low to the ground they are a deciduous but perfectly hardy interesting perennial, a shade lover increasing slowly. From division.

Feb-March 20-01 **£5.50**

↔ 12" (30cm) 4" (10cm)

HYACINTHOIDES

The family name that covers all the varied 'Bluebells' – they are or have been known as Scilla and Endymion.

NON SCRIPTA

The English Bluebell. Violet-blue nodding bells which glisten in damp shady glades. Always in demand and providing that perfect moment in April when the woods turn violet. Self-seeding, so increasing steadily once established. Plant 4" (10cm) deep and 4" (10cm) apart, working on up to 15 per sq. ft.

April/May 125-10 **£5.50 for 10 or £12.20 for 25**

↔ 4" (10cm) 12" (30cm)

↔ = suggested plant spacing in garden situations

Flowering time Flowering height
Item Code Price



Hyacinth Blue Jacket



Hyacinth White Pearl



Hyacinthoides non scripta alba



Hyacinthus non scripta alba bracteata



Hyacinthoides non scripta rosea



Hyacinth Pink Pearl



Hyacinthus Gloria Mundi

NON SCRIPTA ALBA

Wild populations of English Bluebells are nearly all violet-blue, but rarely white flowered plants occur and it is from those that these derive. They do stand out in a sea of blue. These bulbs will always stay white and will split and increase below ground, though their seedlings may be blue.

↔ **4" (10cm)**
April/May
125-12 12" (30cm)
£10.00 for 3

NON SCRIPTA ALBA BRACTEATA

White flowered with a pair of long whiskery bracts alongside each flower node. A quirky oddity.

↔ **4" (10cm)**
April/May
125-26 12" (30cm)
£8.50 for 3

NON SCRIPTA ROSEA

A pale pink clone that is distinctly pink on first opening but fades to near white, we have built these up from a few bulbs over the years.

↔ **4" (10cm)**
April/May
125-34 12" (30cm)
£7.00 for 3



Plants we list which have received the RHS Commendation 'Award of Garden Merit' are now tagged with the trophy symbol. Space does not allow us to add the hardiness rating – please be aware the award applies to the ease of cultivation, excellence and constitution, but not necessarily hardiness.

HYACINTHUS

The Hyacinths below can be potted for use in the house, where they will flower in March and should look magnificent in pots or be planted directly into the garden to flower in March and April. All are tremendously fragrant. They prefer very well drained and sunny situations, reaching a height of 12" (30cm). The skins of Hyacinths can cause an allergic reaction and even if your hands are not itchy after handling them, anywhere more sensitive touched by your fingers can begin to do so. Do take precautions.

WHITE PEARL

Dense glossy white flowered spikes.
↔ **4" (10cm)**
86-38 £4.40 for 3 or £9.50 for 7

BLUE JACKET

Compact spikes of deep blue with a slight silvering to the edge of the petal.

↔ **4" (10cm)**
86-39 £4.40 for 3 or £9.50 for 7

PINK PEARL

A soft rose-pink coloured variety.

↔ **4" (10cm)**
86-40 £4.40 for 3 or £9.50 for 7

GLORIA MUNDI

You'll need to read the full story online on the website as this was a remarkable find and there follows an amazing story. An antique double petalled variety, pale pink with a rosy eye. Still very few bulbs and not yet super-sized.

↔ **4" (10cm)**
86-37 £8.50 each



Hyacinthus Anastasia



Hyacinthus Woodstock



Hyacinthus multiflora white



Ipheion sellowianum



Ipheion Charlotte Bishop



Ipheion Alberto Castillo



Ipheion Froyle Mill

WOODSTOCK

Deep beetroot purple stems and flowers, one of the most dramatic.

↔ 4" (10cm)
86-17 £4.40 for 3 or £9.50 for 7

MULTIFLORA ANASTASIA

The forms above are looked on as being a bit 'chunky' and soldierly by some, the multiflora forms below are more slender, less dense and more informal in appearance and maybe less dominating of the little flowers with which they bloom so early, this is the prettiest deep blue with dark stems.

↔ 4" (10cm)
86-20 £5.50 for 3 or £12.00 for 7

MULTIFLORA WHITE

Simply white when fully open but quite yellow in bud. Slighter and somehow simpler than the 'standard' orientalis forms.

↔ 4" (10cm)
86-09 £4.50 for 3

IPHEION

These little bulbs often start pushing up one or two stems very early with pretty star shaped flowers, but their main display is reserved for late March and April. They are easy in any reasonably well drained soils and a moderately sunny site and although the leaves can be burnt off in a heavy frost (with an associated garlic smell) they seem to recover in weeks. The named forms are better and more interesting than the widely available species forms which tend to be a bit too invasive (and for which reason we do not stock). The biggest bulbs of the first are the size of a small clementine segment, but the others are much smaller.

ALBERTO CASTILLO

Vigorous, with very white starry flowers over grey-green foliage which smells of onions when crushed. Longer stemmed, which raises the flowers well above the foliage and they pick well for small posies but to prevent those longer stems from flopping you should plant them in conditions of fairly good light.

↔ 1-2" (2-5cm)
9" (22cm)
March/April 97-09 £3.80 for 7

SELLOWIANUM

A jaunty yellow flowered species which flowers so early that I doubt it to be hardy in most of the UK. It however grows well under protection where one can provide a dry summer rest.

↔ 1-2" (2-5cm)
6" (15cm)
February/March 97-11 £5.00 for 3

UNIFLORUM CHARLOTTE BISHOP

A pretty pink flowered form, dark pink on opening, fading gracefully in the sun. In well drained soils they are vigorous and will increase.

↔ 1-2" (2-5cm)
6" (15cm)
March/April 97-10 £3.80 for 7

UNIFLORUM FROYLE MILL

First selected in Hampshire which explains the name, with starry, velvety-violet flowers, similarly vigorous in sunny conditions.

↔ 1-2" (2-5cm)
6" (15cm)
March/April 97-08 £3.80 for 5

↔ = suggested plant spacing in garden situations

Flowering time	Flowering height
Item Code	Price



Iris Apollo



Iris Red Ember



Iris Professor Blaauw



Iris Silvery Beauty



Iris Blue Magic



Iris Lion King

IRIS x HOLLANDICA

These are hybrid forms of Iris xiphium that florists use lavishly in the late spring and summer, but the bulbs are reasonably inexpensive and you could easily grow your own? In the garden they are likely to last far longer than cut flowers too! These would be planted 4-6" (10-15cm) apart in sunny conditions and in lighter soils.

APOLLO

On sturdy plants the broad yellow falls (the three lower parts of the iris flower looking like a tongue) the colour of free range egg yolks contrast with the creamy white, even blue tinted, standards (the three upright parts).

↔ 4-6" (10-15cm)
May/June 18-24" (45-60cm)
99-04 £3.70 for 7 or £7.20 for 15

BLUE MAGIC

A deep violet-blue flower with a yellow signal marking (edged in white) on the lower petals. They increased well at the RHS trials and were awarded an AGM.

↔ 4-6" (10-15cm)
May/June 18-24" (45-60cm)
99-12 £3.70 for 7 or £7.20 for 15

LION KING

Deep reddish violet and greeny-brown petals, a combination that should sound pretty enticing? Dark leaved as well, providing additional contrast, later flowering.

↔ 4-6" (10-15cm)
June 18-24" (45-60cm)
99-13 £3.70 for 7 or £7.20 for 15



PROFESSOR BLAAUW
The deepest of rich blues with a yellow flash. You should really expect two flowers per stem and will observe the pregnant swelling of the buds within the stems before they burst open.

↔ 4-6" (10-15cm)
May/June 18-24" (45-60cm)
99-08 £3.70 for 7 or £7.20 for 15



RED EMBER

Rust coloured, though in some lights they also have a deeper tinge of purple on the standards, altogether an unusual hue. Recommended at the trial of these bulbs at Wisley.

↔ 4-6" (10-15cm)
May/June 18-24" (45-60cm)
99-10 £3.30 for 7 or £6.50 for 15



SILVERY BEAUTY

Simply fresh and somehow a bit 'lighter' this is probably my favourite form with white and pale violet flowers above leaves that display the silvery sheen implied in the name. Roundly admired at Wisley.

↔ 4-6" (10-15cm)
May/June 18-24" (45-60cm)
99-11 £3.50 for 7 or £7.00 for 15



Plants we list which have received the RHS Commendation 'Award of Garden Merit' are now tagged with the trophy symbol. Space does not allow us to add the hardiness rating – please be aware the award applies to the ease of cultivation, excellence and constitution, but not necessarily hardiness.

IRIS - DWARF (RETICULATA)

These are derived from plants native to the Middle East and do best in well drained conditions with a warm dry summer rest. In UK conditions with our usual, but these days more infrequent, summer rain this is not easy to achieve so they sometimes do not do well year on year. It helps to plant them deeply 5" (12cm). The best situation would be a raised bed in the sun with well drained soil conditions. There you'll be able to admire them up close and smell the scented ones. 15 bulbs will nicely fill a 9" (20cm) planter or pot filled with sharply draining compost for an early spring treat.



GAP Images



Iris Pixie



Iris Harmony



Iris Pauline



Iris Purple Hill

HARMONY

Flowering with amazingly intense gentian blue flowers, only marked with a small yellow and white crest on the falls. Our most popular of all the forms.

↔ 2-4" (5-10cm)

Feb/March 6" (15cm)
101-11 £4.40 for 15 or £6.75 for 25

KATHARINE HODGKIN



An utterly distinct hybrid raised by EB Anderson in the 1960s. Predominantly yellow with blue and sea-green veining and markings over the wide petals. Probably the most persistent and perennial form when planted in a rich, gritty soil in a sunny site.

↔ 2-4" (5-10cm)

Feb/March 6" (15cm)
101-07 £3.30 for 5 or £6.00 for 10

KATHARINE'S GOLD

Creamy coloured predominantly with flecks of darker yellow and blue on the falls. Visually quite startling so early in the year. The bulbs are always smaller.

↔ 2-4" (5-10cm)

Feb/March 6" (15cm)
101-24 £4.00 for 3

PAULINE

Narrower petalled with dark velvety purple flowers with bright white highlights on the falls. Mid-season flowering.

↔ 2-4" (5-10cm)

Feb/March 6" (15cm)
101-13 £5.50 for 15 or £8.00 for 25

PIXIE



Wide petalled in the deepest of blue, not quite purple, and equally scented.

↔ 2-4" (5-10cm)

Feb/March 6" (15cm)
101-23 £4.40 for 15 or £6.75 for 25

PURPLE HILL

Purple petalled and now the closest form to I. George that one can now obtain, one which was for years the most popular purple form but is now not available.

↔ 2-4" (5-10cm)

Feb/March 6" (15cm)
101-26 £5.50 for 10 or £8.00 for 15



Iris Katharine's Gold



Iris Katharine Hodgkin



Iris Spot On



Iris winogradowii



Ixiolirion tataricum (ledebourii)



Iris bucharica



Iris graminea



Leucojum Gravetye Giant

SPOT ON

Raised by Alan McMurtrie in Canada this hybrid is evidently the result of crossing I. reticulata Pauline x I. reticulata bakeriana. It appears and grows much like the others but is slightly smaller, the white throat markings are distinct and outstanding, surrounded as they are by the rich purples.

↔ 2-4" (5-10cm)

Feb/March 101-25 6" (15cm) £4.50 for 5 or £8.00 for 10

WINOGRADOWII



A pale yellow Caucasian species with pale freckling on the petals. Hardy and beautiful, preferring it cool, light and damp in the spring and drier (without being parched) in the summer.

↔ 2-4" (5-10cm)

Feb/March 101-27 6" (15cm) £5.00

IRIS (OTHER TYPES)

BUCHARICA

Easy to grow in any sunny border or in a well drained sunny site where little else seems to do well. They originate from Central Asia with bright glossy leaves, creamy white and yellow flowers over low, bright, shiny foliage.

↔ 6" (15cm)

March/April 103-09 12" (30cm) £4.50 for 3

GRAMINEA



Grassy leaved perennial with a tidy habit growing in open sunny conditions. The purple and lilac flowers are rather well hidden in the foliage but pick one and sniff, fabulous – ripe greengages to my nose. Fresh dug divisions of these perennials.

↔ 5" (12cm)

May 103-06 12" (30cm) £6.50

IXIOLIRION

TATARICUM (LEDEBOURII)

Originally from the steppes of Central Asia, the grass-like foliage hides flowers which become more star like as they open more widely. The colour varies slightly from violet-mauve to lilac. Free draining soil in a sunny situation would suit them best and they look better with quite close planting.

May 104-04

↔ 3" (8cm)

9" (20cm)

£3.80 for 10 or £8.50 for 25

LEUCOJUM

ÆSTIVUM GRAVETYE GIANT



The Loddon Lily, also known as Summer Snowflakes, with white, hanging, bell-shaped flowers and often confused with snowdrops despite them flowering much later (but not really in summer). Strings of emerald-tipped white bells hang from bare upright stems above glossy green foliage. Particularly happy in damp, even winter-flooded situations, but they will do anywhere where the soil is heavier and more moisture retentive. Daffodil-like bulbs, planted 5" (12cm) deep and 6" (15cm) apart.

↔ 6" (15cm)

18" (45cm)

April 106-07 £3.90 for 3 or £8.30 for 7

↔ = suggested plant spacing in garden situations

Flowering time Item Code Flowering height Price



Lilium candidum

LILIUM

Lilies would have to come near the top of any list of most gardeners' favourite bulbs. For stature, grace and perfume they are unbeatable, but to ensure longevity one needs to get things right. Unless it says otherwise (in the text below) do incorporate plenty of organic matter in the area to be planted, having chosen a site that is of good, probably rich soil, not too dry in summer, and possibly shaded – many lily flowers will last longer in cooler shade. Plant at least 5" deep (except *L. candidum*). If planting in the confinement of a container, try to ensure regular watering. Lily beetle are a problem in warmer parts. Readily seen as red and black beetles they eat any foliage of the Liliaceae (which includes the *Fritillaria*). These beetles drop off and hide on the ground if you alarm them, but sneakily picking off the adults and cleaning the messy black 'eggs' off the foliage is moderately effective (and squashing them satisfies a lust for retribution) although Provado used systematically seems to reduce future generations more effectively. Please Note: The martagon lilies are usually not ready for despatch till mid-October so if you include them on your order that may affect the delivery time of your whole order (we do try to save costs and have your order all come at once).

CANDIDUM

The Madonna Lily. These can be included on orders from either Late Summer or Autumn planting, but they are best planted early in the autumn. See page 9 for the full details

MARTAGON

The species plants from which these derive (and which are more variable in colour and shade) is not grown commercially in Europe any more. These listed below are grown by micro propagation initially so will be identical within varieties.

MARTAGON CLAUDE SHRIDE

A dark mahogany red selection of the martagon lily with yellow flecking at the throat.

↔ 6" (15cm)
36" (90cm)
June/July 107-41 £6.50 or £18.80 for 3



Lilium martagon Claude Shride



Lilium martagon Sunny Morning

MARTAGON SNOWY MORNING

Pure white with extended orange anthers.

↔ 6" (15cm)
36" (90cm)
June/July 107-47 £7.00 or £19.50 for 3

MARTAGON SUNNY MORNING

Golden orange flowered plants with deeper mahogany speckles.

↔ 6" (15cm)
36" (90cm)
June/July 107-45 £6.50 or £18.80 for 3

REGALE

Familiar and much loved favourites with ivory-white trumpets, flushed with pink on their backs, providing great wafts of beautiful scent. Accommodating in most gardens, either in borders or large deep pots. Autumn planted *L. regale* bulbs always seem to do better than spring planted ones. With longer to root over the winter before they flower that would be logical?

↔ 6" (15cm)
36" (90cm)
July 107-04 £11.00 for 3



Lilium regale



Lilium martagon Snowy Morning

MAIANTHEMUM

BIFOLIUM

An unusual native of northern England. Plants with leaves that look a bit like small Hostas. These are plants for shade with ground covering possibilities in nice, leafy, damp, dappled shade where they can then form a dense mat. The leaves open in the spring with a welcome fresh greenness growing from the small wiry roots. The flowers are like small white plumes.

↔ 3" (8cm)
4" (10cm)
May 110-04 £5.00 for 5



Plants we list which have received the RHS Commendation 'Award of Garden Merit' are now tagged with the trophy symbol. Space does not allow us to add the hardiness rating – please be aware the award applies to the ease of cultivation, excellence and constitution, but not necessarily hardiness.



Maianthemum bifolium



Mathiasella bupleuroides Green Dream

MATHIASELLA

A Mexican umbellifer which was first described only in 1954. They are architectural plants and seem to do well in full sun or part shade with green foliage in spring, and in the summer pink and purple tints. They are evidently sterile here and consequently last for several months in flower, lime green when they first open but coloured with purple later in the year.

BUPLEUROIDES GREEN DREAM

Unfamiliar plants still, but they have the look of some other more recognisable and favourite garden plants - Hellebores, Angelica and maybe even Euphorbia, so one can see how these have become desirable. Gardeners love long lasting green flowers! Plants from 9cm pots that ought to settle in this winter and flower next year.

↔ 24" (60cm)
24" (60cm)
May 69-04 £9.00

MUSCARI

The 'Grape Hyacinths', and as the name implies some are heavily scented. All do well in the drier, sunny conditions provided under deciduous shrubs in the early spring, with summer shade later in the year. Part of the group of 'Little Blue Jobs', that create the backdrop and provide the 'chorus' to the spring display. The common and weedy 'ordinary' Grape Hyacinth (*M. armeniacum*) is undoubtedly best avoided - it gives the well behaved Muscari a bad name. As a guide plant them 4" (10cm) deep and 2" (5cm) apart.



GAP Images



Muscari azureum



Muscari Blue Magic



Muscari White Magic



Muscari Baby's Breath

GAP Images

AZUREUM



Probably the easiest to grow and not at all invasive. Tightly packed powder-blue flowers, flared open at their tips, emerging initially as a cone shaped spike but becoming more rounded as more flowers open. For a well-drained sink or rockery or in light soils at the front of a spring border.

↔ 2-3" (5-8cm)

March 5" (12cm)
111-15 £3.80 for 10 or £8.80 for 25

AUCHERI BLUE MAGIC

Bright blue with white rims to the mature flowers. These selected colour forms are derived from the species *M. aucheri* which is native to alpine turf in Turkey, they will not be invasive here.

↔ 2" (5cm)

April 5" (12cm)
111-20 £4.70 for 10 or £10.50 for 25

AUCHERI WHITE MAGIC

The aucheri forms are less vigorous, (and by implication not invasive) so suited to smaller gardens. This selection has attractive pale green flower buds opening white, initially quite pointed but rounded when in full flower.

↔ 2" (5cm)

April 5" (12cm)
111-14 £7.00 for 10 or £16.25 for 25

BABY'S BREATH (JENNY ROBINSON)



This form of *M. neglectum* was found by Jenny Robinson, the then holder of the National Collection of Muscari in Cyprus. Opening from lime green buds the flowers are in the palest of blues with a wonderful scent.

↔ 2" (5cm)

April 6" (15cm)
111-23 £3.80 for 10 or £8.80 for 25



Muscari botryoides album



Muscari Valerie Finnis

BOTRYOIDES ALBUM

A smaller form with pale leaves, certainly no thug, with neat strings of little pearls strung on pale stems. Scented.

↔ 2-3" (5-8cm)

April 6" (15cm)
111-06 £5.00 for 10 or £11.50 for 25

VALERIE FINNIS

Tightly packed ropes of scented powder blue flowers, best grown in open sunny conditions. It arose in Valerie Finnis' garden in Northamptonshire (by then she was Lady Scott).

↔ 3" (8cm)

March 7" (18cm)
111-18 £6.00 for 10 or £14.00 for 25

↔ = suggested plant spacing
in garden situations

Flowering time Flowering height
Item Code Price



**Insect friendly
Plants**



Narcissus cyclamineus



Narcissus Desert Bells



Narcissus February Gold

NARCISSUS (DAFFODILS)

The highlight of the April garden in a 'normal' year, though some earlier ones are often welcome and the last will flower in May. Do plant them really quite deeply with 4-6" (10-15cm) of soil over the biggest bulbs (unless told differently for the smaller forms), where they will remain cool and moist in the spring and safe from gardening activity above them in the summer. Do not be tempted to cut back or tidy the foliage after flowering – this period of replenishment of the bulb's starchy food reserves is critical to future flowering. A liquid feed whilst the leaves are still green will benefit clumps in poorer soil, but generally feeding is unnecessary. I would suggest that you plant in groups (and particularly any that you 'naturalise') resulting in swathes of the same variety and not a jumbled crowd – the effect is generally better. Most should clump up from being planted about 4-6" (10-15cm) apart unless we say differently, further apart for more 'relaxed' planting. Divisions: The number in brackets after the name represents the type of flower expressed by the divisions within the Narcissus family: 1 = trumpet, 2 = large cupped, 3 = small cupped, 4 = double flowered, 5 = triandrus forms, 6 = cyclamineus types, 7 = jonquilla forms, 8 = tazetta forms, 9 = poeticus types, 10 = bulbocodium types, 11 = split corona, 12 = miscellaneous, 13 = species and wild variants (more suitable for naturalising).

The suggested flowering month should be used as a guide only – annual variation can be great, as recent springs have shown.

The flowering height suggested is the height at which the first flowers open, the stems often extend thereafter.



Narcissus Elka



Narcissus Exotic Mystery



Narcissus fernandesii var. cordubensis

CYCLAMINEUS (6)



An iconic small species, one that is much loved and sought after by many, but they rarely do well in warm, dry, limey soils. Neutral to acid soils suit them better, moist in spring and more shaded in summer. Grow them where they will be happy and seed about. We always sell out of them early.

↔ 2-3" (5-8cm)

March
113-179

5" (12cm)
£4.00

DESERT BELLS (7)

Multiheaded with pale yellow flowers that gradually fade to a crisp white, the trumpets fading more slowly so that at any moment one might have all the stages showing together which is nice.

↔ 4-5" (10-12cm)

April
113-35

10" (25cm)
£6.20 for 3

ELKA (1)



A perfectly proportioned pale bicoloured miniature with a relatively long cream coloured trumpet and milk white petals. It was raised by Alec Gray, a Cornish flower grower and distinguished daffodil hybridiser of the 1940s and 50s.

↔ 2-3" (5-8cm)

March/April
113-61

6" (15cm)
£4.40 for 5

EXOTIC MYSTERY (11)

Until now I have not been a great fan of the split corona group, usually with large flowers, but this is a smaller flowered form with slightly downcast heads in the most magical soft primrose which looks lovely with pale Muscari blue. They seem to last ages in flower. I have reports of those that have bought it wondering whether they would come to admire them finding that they do.

↔ 4-5" (10-12cm)

April
113-20

15" (38cm)
£8.00 for 5 or £15.00 for 10

FEBRUARY GOLD (6)



Dating back to 1923. Early flowering but, despite the name, only opening in late February in very mild winters. A long lasting, upright, golden yellow garden favourite with slightly swept back petals and a good stature, also good for pots or tubs.

↔ 4-6" (10-15cm)

Feb/March
113-09

12" (30cm)
£7.50 for 10 or £17.50 for 25

FERNANDESII VAR. CORDUBENSIS (13)

A small bright yellow jonquil with what I think of as a jaunty attitude. Generally with several small, gleaming, fragrant flowers on each stem and narrow grass like foliage. A raised bed in the sun is a likely requirement for it to increase happily. Naturally small bulbs.

↔ 2" (5cm)

April
113-103

10" (25cm)
£4.40 for 5 or £8.00 for 10



Narcissus Gipsy Queen



Narcissus Julia Jane



Narcissus Minnow



Narcissus mochatatus



Narcissus Hawera



Narcissus Martinette



Narcissus More and More



Narcissus New Baby

GIPSY QUEEN (1)

A small and highly desirable hybrid with what are initially pale greenish yellow flowers with darker tips which fade to white as they age. They are lovely but would prefer a cooler spot.

April
113-107

↔ 2-3" (5-8cm)
10" (25cm)
£6.50 for 3

HAWERA (5)

Small clear lemon-yellow flowers with prominent cups and needle like, deep green foliage typify this plant. It is much happier in a drier and sunnier site than many of its cousins- as is the case for most of the narrow leaved forms. Shorter and more wind tolerant. Pack them in quite tightly for a mass of colour on a rockery. First bred in New Zealand.

April
113-38

↔ 3" (8cm)
10" (25cm)
£6.00 for 10 or £13.50 for 25

JULIA JANE (10)

Soft pale yellow with billowing skirts, a named form of *N. bulbocodium romieuxii*, the species which derives from high on the Atlas mountains. Charmingly petite and early flowering they look better and flower for longer if protected from too much wind and rain but are totally hardy with regard to the cold. In the summer they should stay dry. Small bulbs as you would expect.

Feb
113-101

↔ 2-3" (5-8cm)
6" (15cm)
£4.90 for 5

MARTINETTE (8)

Brilliant yellow with several flowers on each stem, the centres darker, with a small, more orange coloured cup with an enormous scent. Narrower leaved and taller, not one for the shady garden.

March
113-84

↔ 4-5" (10-12cm)
14" (35cm)
£3.80 for 5 or £10.50 for 15

MINNOW (8)

Multi-headed, with many small primrose yellow flowers held flat only just above the top of the foliage, the small cup rather darker when they first open. It also needs more sunny conditions and to be grown in better drained soils but is one that I wouldn't be without.

March/April
113-51

↔ 3" (8cm)
12" (30cm)
£4.70 for 10 or £10.50 for 25

MORE AND MORE (7)

Although I can't say that I like the name very much I can see how it occurred to someone, these produce many, many flowers! Each bulb produces 4 or 5 stems with several flowers each. Low growing and late flowering, ideal for a rockery or in a planter. Naturally small bulbs.

April
113-104

↔ 2-3" (5-8cm)
9" (25cm)
£3.00 for 5 or £8.00 for 15

MOSCHATUS (13)

Palest creamy-white with a flower that always seems downcast in the way that it hangs – some describe it as swanlike? They seem to prefer damper soil in more shade than most daffodils, but the pale colours show in shadier conditions perfectly.

April
113-94

↔ 1-2" (3-5cm)
12" (30cm)
£6.20 for 3

NEW BABY (7)

A newly bred jonquil form with narrow leaves and sharp lemon flowers with a pale edge. Flowering surprisingly late with hugely scented flowers suitable for the rockery or sunny well drained bed.

April / May
113-106

↔ 1-2" (3-5cm)
6" (15cm)
£4.00 for 5 or £7.20 for 10

↔ = suggested plant spacing
in garden situations

Flowering time
Item Code

Flowering height
Price



Narcissus Oxford Gold



Narcissus Pipit



Narcissus Rijnvelds Early Sensation



Narcissus Segovia



Narcissus obvallaris



Narcissus poeticus recurvus



Narcissus Sailboat



Narcissus Silver Chimes

OXFORD GOLD (10) 🏆
A selected form of *N. bulbocodium* (the hoop petticoat forms) with masses of large, butter yellow blooms which flower quite early with a great scent. The foliage is narrow and needle-like, indicating that they would prefer a sunnier situation.

↔ 1-2" (3-5cm)

April 113-92 6" (15cm)
£4.50 for 5 or £8.30 for 10

OBVALLARIS (13) 🏆
A daffodil suitable for naturalising that grows wild in South Wales is the Tenby daffodil, this looks just like it with a neat and tidy all yellow flower (though some doubt as to whether it is exactly the same plant). Perfect for planting into rough grass to provide 'bomb-proof' simple yellow daffodils.

↔ 4" (10cm)

March 113-30 10" (25cm)
£4.20 for 5, £11.40 for 15, or £21.50 for 30

PIPIT (7)
A multiheaded form called a 'reverse' bicolor. These flowers open with all parts a sharp lemon yellow and then fade outwards from the centre of the flower to a paler, creamier colour (most bicolors fade from the tips of the petals inwards). Tough enough to plant in rough grass.

↔ 4" (10cm)

April 113-32 12" (30cm)
£3.80 for 5 or £6.80 for 10

POETICUS RECURVUS (13) 🏆
The Pheasant's Eye daffodil. Wild in high alpine meadows in Europe and found gracing old gardens and orchards here. White with slightly swept back petals, highlighted by a stubby, burgundy rimmed cup. One of the last daffodils to flower and deliciously fragrant too. Very suitable for naturalising but because of its late flowering better planted in dappled shade in grass, or in a cool border amongst other plants.

↔ 3" (8cm)

May 113-28 15" (35cm)
£4.50 for 5, £12.20 for 15, or £21.60 for 30

RIJNVELD'S EARLY SENSATION (1) 🏆
Bright yellow throughout with a short, flared trumpet. This variety's outstanding quality is that it really does flower in the garden around New Year, sometimes earlier. It is going over when the main daffodil season begins. They provide a blast of spring in the middle of winter, even before the snowdrops. Plant them where they might be a bit protected from wintery gales.

↔ 4" (10cm)

Dec/Feb 113-44 12" (30cm)
£5.90 for 5 or £10.50 for 10

SAILBOAT (7) 🏆
Pale and interesting with a pleasant perfume, the white petals fly back from the slightly flared, pale yellow trumpet on flowers which seem to hold their chins up! Keep calm and carry on flowering?

↔ 4-5" (10-12cm)

March/April 113-89 14" (35cm)
£3.30 for 5 or £9.00 for 15

SEGOVIA (3) 🏆
These have a flattened pale lemon trumpet that sits squarely against the bright white petals which flare back slightly. The whole effect is fresh and bright with narrow leaves, so it would like a brighter spot in which to grow.

↔ 3-5" (8-12cm)

April 113-87 6" (15cm)
£4.50 for 5 or £8.20 for 10

SILVER CHIMES (8)
A lovely multi-headed tazetta form which would best be planted in slightly warmer conditions where it is not too wet. The tazetta forms are not so good where it is very cold. Broad leaved with pure white petals around a pale primrose cup with a huge scent. Big bulbs.

↔ 4" (10cm)

April 113-41 12" (30cm)
£6.60 for 5 or £12.00 for 10



Narcissus Sir Winston Churchill



Narcissus Tete-a-tete



Narcissus Topolino



Narcissus W.P. Milner



Narcissus Sweetness



Narcissus Thalia



Narcissus Toto



Narcissus Ziva

SIR WINSTON CHURCHILL (4)



Filly white petals mix with splashes of sulphur yellow to produce a frothy and exuberant flower with a huge scent. They are quite tall and late flowering. Reliable, with several stems per bulb and each of these multiheaded.

↔ 4" (10cm)

April 113-97 18" (45cm)
£4.20 for 5 or £11.50 for 15

SWEETNESS (7)



Sturdy, simple, bright yellow and deliciously scented with narrow foliage that does not get in the way, everything a daffodil ought to be!

↔ 4" (10cm)

March 113-24 14" (35cm)
£3.80 for 5 or £10.00 for 15

TETE-A-TETE (12)



Widely grown since it was raised soon after WW2 and many people's favourite small daffodil. Very short when first in flower, extending in stem length as it matures and long lasting in cool conditions. Deep golden yellow and multi-headed from the biggest bulbs.

↔ 2-3" (5-8cm)

Feb/March 113-16 6" (15cm)
£6.60 for 10, £15.00 for 25

THALIA (5)

Raised in 1916. A national treasure, refined and elegant and a perfect foil for all those March yellows with a greeny-white, multi-headed, scented flower. A well-known classy favourite.

↔ 4" (10cm)

March/April 113-42 14" (35cm)
£3.70 for 5, £10.50 for 15, or £19.50 for 30

TOPOLINO (1)



Small, vigorous and as close as one can now get in commercial stocks to *N. lobularis*, the wild *N. pseudonarcissus* which is sadly unobtainable now.

↔ 2-3" (5-8cm)

March/ April 113-54 8" (20cm)
£3.50 for 5 or £9.60 for 15

TOTO (12)



Gorgeously pale and simple flowered, the trumpet just a shade darker than the petals and early enough to overlap with that blue phase in the garden when the Anemones, Muscari and Chionodoxa are at their best, the combination is wonderful.

↔ 4" (10cm)

March/ April 113-90 8" (20cm)
£3.90 for 3

W. P. MILNER (1)



Attributed to Henry Backhouse' breeding in Yorkshire pre 1869 and evidently named after William Pashley Milner his brother-in-law. Pale yellow throughout with swept-forward petals, beyond which peeps the shy trumpet. Long lasting and good for naturalising being smaller in stature.

↔ 4" (10cm)

March/April 113-47 9" (22cm)
£3.00 for 5 or £8.00 for 15

(PAPERWHITE) ZIVA (8)

For indoor or very protected situations, see the main entry on Page 9. These are best suited to indoor display with a huge scent. These can be included on orders from either Late Summer of Autumn planting.

↔ 1-2" (2-4cm) (potted)

Dec / Jan 113-152 15" (38cm)
£9.00 for 5 or £11.50 for 7



See our
Narcissus
Collection on
page 65



↔ = suggested plant spacing
in garden situations
Flowering time Flowering height
Item Code Price



Ornithogalum magnum Moskou



Ornithogalum pyrenaicum



Paeonia mlokosewitschii



Paeonia obovata alba

GAP Images



Ornithogalum nutans



Ornithogalum umbellatum



Paradisea lusitanica

ORNITHOGALUM

The 'Star of Bethlehem' family. Silvery white and green flowered and generally tough and accommodating, many are perfect for naturalising.

MAGNUM MOSKOU

I have these successfully growing in some rough (late cut) grass to follow some Camassias and they are doing well, but they could also enhance a border. Tall, white flowered with dozens of flowers circling a stiff stem.

June
117-16

↔ 4" (10cm)
24" (60cm)
£5.70 for 3

NUTANS

Very pretty, soft silvery grey-green flowers, bluebell-like in stature and long lasting when picked. They probably should be grown in light shade. If dry or stressed in May the foliage tends to naturally begin to yellow at flowering time. Plant irregularly, about 3" (8 cm) apart, 10-15 per square foot.

May
117-09

↔ 2-3" (5-8cm)
9" (22cm)
£4.00 for 15 or £7.00 for 30

PYRENAICUM

Tall, slim, waving wands tipped with starry pale green flowers. A naturalised native in the area of Bath, and hence called the 'Bath Asparagus'. Easy to grow in free draining limey soil, planted 12" (30cm) apart.

June
117-11

↔ 12" (30cm)
18" (45cm)
£12.00 for 3

UMBELLATUM

A sun lover and excellent in thin grass from what are unpromising looking bulbs. Clumps of them in sunny conditions really hug the ground and they are especially useful for carpeting a sunny bank with white in April with their grey-green leaves and white flowers. Plant about 4" (10cm) apart, 10 per square foot.

April/May
117-13

↔ 4" (10cm)
4" (10cm)
£5.00 for 10
or £11.00 for 25

PAEONIA

MLOKOSEWITSCHII



The much loved 'Molly the Witch' Paeony with tissue-like petals in pale yellow. Slow growing, tough as old boots and sadly not long in flower. But the seed heads look great too? These will be field dug plants that will take some effort to lift. Prepare for untidy pieces, but save yourselves a ten year wait! Just a small number to see how manageable they are.

May
38-08

↔ 18" (45cm)
24-36" (60-90cm)
£20.00

OBOVATA ALBA

Grey leaved, often with a darker purple tint and large bowl shaped white flowers. A very unusual form from the mountains of China. These are still young (unflowered) plants in 9cm pots – but they need to be supplied when young to avoid disturbance later. Plant them out in fairly sunny conditions and wait to be wowed!

May/ June
38-13

↔ 18" (45cm)
24-36" (60-90cm)
£8.00

PARADISEA

LUSITANICA

This species comes from Northern Portugal and Spain where it grows in damp meadows. When dormant their thickened fleshy roots look a bit like those of an Agapanthus crown. In flower they provide elegant, clean stemmed spires of bright white flowers providing impressive uprights in the herbaceous border, and a great accompaniment to the Alliums. Supplied as fresh dug divisions, to be planted 4" (10cm) deep in moisture retentive soil in sun or part shade.

June
140-04

↔ 12" (30cm)
36-48" (90-120cm)
£17.00 for 3



Plants we list which have received the RHS Commendation 'Award of Garden Merit' are now tagged with the trophy symbol. Space does not allow us to add the hardiness rating – please be aware the award applies to the ease of cultivation, excellence and constitution, but not necessarily hardiness.



Polygonatum betbergii



Polygonatum odoratum flore pleno



Sanguinaria canadensis



Polygonatum curvistylum



Polygonatum x hybridum



Puschkinia libanotica alba



Sanguinaria canadensis flore pleno

POLYGONATUM

The Solomon's Seal family. Hardy perennials that grow in most situations pretty much without any attention, preferring moisture-retentive, heavier soils best of all. They do get quite a bit taller in shade. Their only downfall is their appeal to the Gooseberry Sawfly caterpillar which strips the leaves in June in some gardens. There is now an organic nematode spray available against them.

BETBERG

Named after the German village in the Black Forest near Laufen where it was first found. The stems and leaves a dark chocolate brown when they emerge (as long as they get direct sunlight), against these the white flowers are a marked contrast. As the season progresses the leaves become more olive green. Slow to increase for us, we are probably too dry for them.

↔ 4" (10cm)
April/May 24-30" (50-75cm)
37-16 £12.00

CURVISTYLUM

Dark stemmed plants with narrow purple tinted foliage and mauve waisted bell shaped flowers in whorls at each leaf axil. Graceful yet tough in sun or part shade.

↔ 5" (12cm)
June 30" (75cm)
37-10 £11.00 for 3

ODORATUM FLORE PLENO

The rarer double flowered form which when in flower requires one to turn the flowers over to check out the tidy hose in hose arrangement.

↔ 5" (12cm)
May 18" (45cm)
37-12 £8.00 for 3

X HYBRIDUM

A naturally occurring hybrid between P. multiflorum and P. odoratum with gracefully arching stems and pendant jade green and ivory flowers. Increasing slowly but steadily to form a thicket. A great screen in damp, moist shade. The stems cut well for flower arrangements when you have plenty.

↔ 5" (12cm)
May/June 24-36" (60-90cm)
37-04 £6.50 for 3 or £12.00 for 7

PUSCHKINIA

LIBANOTICA ALBA

There are lots of 'Little Blue Bulbs' to add to the chorus line in the spring but fewer good whites. I have included these for that reason and because some planted around the edge of a container of tulips were so successful this spring.

↔ 2" (5cm)
April 5" (12cm)
198-01 £2.60 for 10,
£6.00 for 25 or £10.50 for 50

SANGUINARIA

CANADENSIS

The single flowered form of this bone hardy plant from North America, another of those wonderful woodland plants that can form an amazing green tapestry in dampish shade along with Uvularia, Erythronium, Trilliums and our Wood Anemones. The emerging leaves emerge clasped around the red flower stem and open to release the simplest pure white flowers. Sought after and slow to increase from fresh dug, thick, reddish rhizomes.

↔ 4" (10cm)
April 6" (15cm)
124-04 £7.00

CANADENSIS FLORE PLENA

The rather rarer double flowered form. A pure white pom-pom which will briefly provide huge pleasure before you have to wait another year to do it again!

↔ 4" (12cm)
April 6" (15cm)
124-05 £10.00



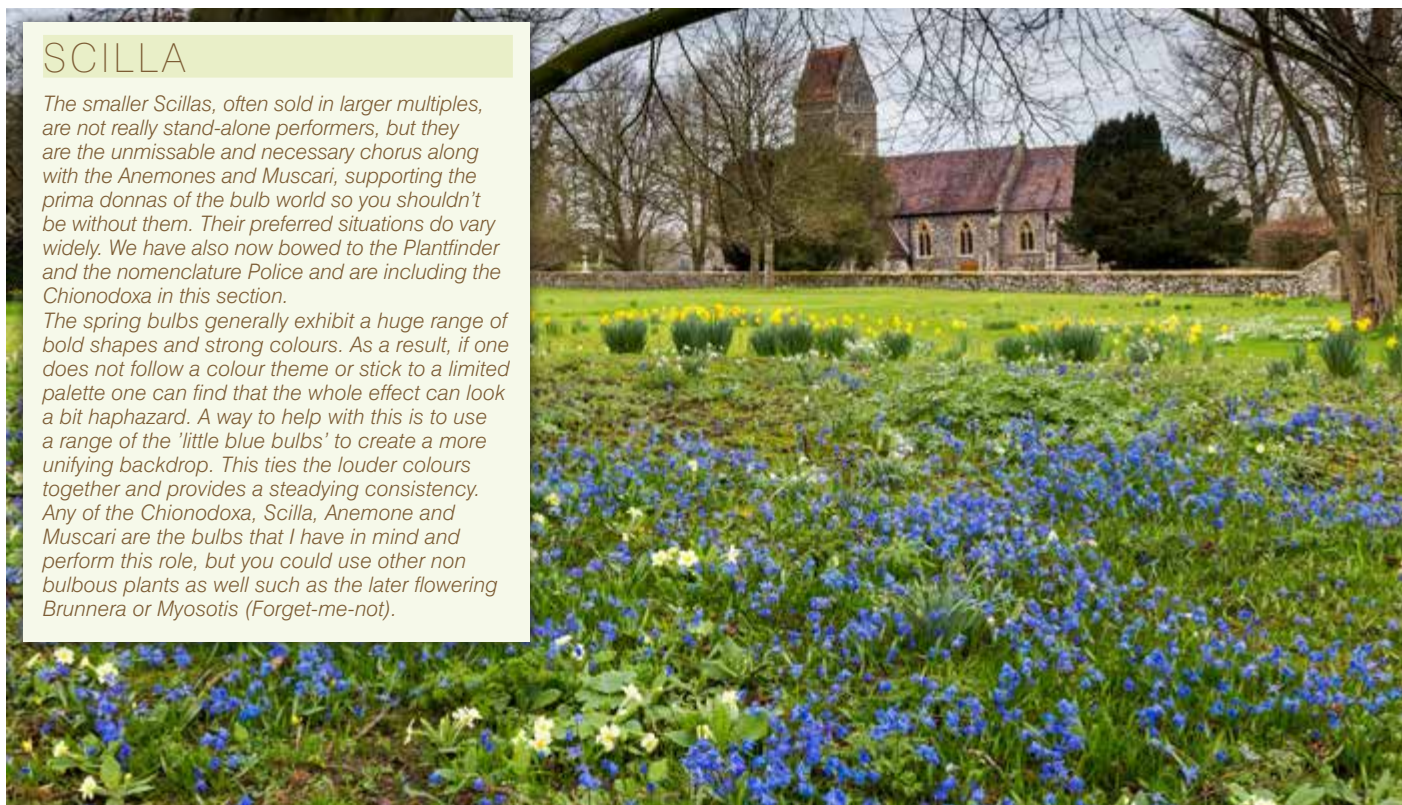
↔ = suggested plant spacing in garden situations

Flowering time Flowering height
Item Code Price

SCILLA

The smaller Scillas, often sold in larger multiples, are not really stand-alone performers, but they are the unmissable and necessary chorus along with the Anemones and Muscari, supporting the prima donnas of the bulb world so you shouldn't be without them. Their preferred situations do vary widely. We have also now bowed to the Plantfinder and the nomenclature Police and are including the Chionodoxa in this section.

The spring bulbs generally exhibit a huge range of bold shapes and strong colours. As a result, if one does not follow a colour theme or stick to a limited palette one can find that the whole effect can look a bit haphazard. A way to help with this is to use a range of the 'little blue bulbs' to create a more unifying backdrop. This ties the louder colours together and provides a steadying consistency. Any of the Chionodoxa, Scilla, Anemone and Muscari are the bulbs that I have in mind and perform this role, but you could use other non bulbous plants as well such as the later flowering Brunnera or Myosotis (Forget-me-not).



GAP Images



Scilla bifolia



Scilla bifolia alba



Scilla bifolia rosea



Scilla forbesii Blue Giant

BIFOLIA

An easy dwarf species with starry purple-blue flowers and waxy leaves. Naturalises under shrubs or in light grass in summer shade where the massed heads really create an early purple haze, flowering with the anemones and early daffodils. Small bulbs that you need to be generous with, plant them 2-3" (5-8 cm) apart, 15 per square foot.

↔ 2-3" (5-8cm)

Feb/Mar 125-05 6" (15cm)
£3.50 for 10, £7.75 for 25,
or £14.50 for 50

BIFOLIA ALBA

The white flowered form.

↔ 2-3" (5-8cm)

Feb/Mar 125-04 6" (15cm)
£4.00 for 10, £9.20 for 25,
or £17.50 for 50



BIFOLIA ROSEA

The pale pink flowered form

↔ 2-3" (5-8cm)

Feb/Mar 125-06 6" (15cm)
£4.00 for 10, £9.20 for 25,
or £17.50 for 50

FORBESII BLUE GIANT (CHIONODOXA)

Larger flowered than the S. luciliae with a more noticeable central white throat. The photo was taken of them in a pot of tulips that were yet to flower and the S. Blue Giant were flowering their socks off, providing a very good early show.

↔ 2-3" (5-8cm)

March/April 72-11 6" (15cm)
£5.00 for 10 or £11.50 for 25

FORBESII PINK GIANT (CHIONODOXA)

With a spike of very pretty, simple, pale pink flowers these need to receive more light to avoid them getting too leggy and flopping over. Plant about 2"-3" (5-8cm) apart, or 15 per square foot.

↔ <2-3" (5-8cm)

Feb/March 72-10 5" (12cm)
£3.50 for 10 or £7.70 for 25

"The range is enormous and the quality is consistently very good"

Gardening Which?
(April 2021)



Scilla forbesii Pink Giant



Scilla lilio-hyacinthus



Scilla luciliae



Scilla peruviana



Scilla lilio-hyacinthus albus



Scilla mischtschenkoana



Scilla siberica Spring Beauty

LILIO-HYACINTHUS

A great addition to the early spring woodland tapestry. Broad and tidy leaved, with pretty, delicate racemes of soft pale blue. Neat looking mounds of foliage and a joy when in flower. The bulbs are formed of loose lily-like scales which dislike being dried out (hence the name). Clump forming and best in some shade. Do please order these early, they 'move' better in September rather than too far into October.

Mar/April
125-28

↔ 3" (8cm)
8" (20 cm)
£10.50 for 3

LILIO-HYACINTHUS ALBA

This pretty form has all the attributes of the blue but the flowers are white and the leaves are slightly paler than those of the blue flowered form above. Again best grown in some shade.

Mar/April
125-29

↔ 3" (8cm)
8" (20 cm)
£10.50 for 3

LUCILIAE (CHIONODOXA)

Multifunctional small bulbs, they can go into your beds of perennials or be allowed to seed about in rock gardens in the sun or part shade, where they combine well with the daffodils, grape hyacinths, crocuses and other small spring bulbs. They can also be naturalized in grass (though mowing too early and too short needs to be avoided). Brilliant blue with white centres. Buy lots your planting densities need to be generous, though they will seed about in time. You'll initially need about 30-40 per square ft.

Feb/March
72-04

↔ 1-2" (3-5cm)
4" (10cm)
£4.40 for 20 or £10.00 for 50



MISCHTSCHENKOANA (TUBERGENIANA)

The earliest pale-blue gem. They seem to ignore the winter cold and emerge especially early to flower at the same time as the Cyclamen coum and the winter aconites - far earlier than other similar plants. Very hardy and well suited to the rockery or a border and under deciduous shrubs.

Feb
125-17

↔ 3-4" (8-10cm)
4" (10cm)
£3.80 for 5 or £10.50 for 15



PERUVIANA

Low broad, fleshy, near evergreen leaved plants produce a dramatically architectural flower head of bright blue flowers, in bud it sparks one's anticipation! Easy in good soil but they seem to do better in full light and planted deeply. They do also flower better in the spring following a warm summer. Suffering from an unfortunate confusion when they first arrived in Britain leading to their inaccurate name (they are of Mediterranean origin).

May /June
125-11

↔ 10" (25cm)
10" (25cm)
£5.20 or £15.00 for 3

SIBERICA SPRING BEAUTY

Bone hardy, these hail from the Black Sea area. The Prussian-blue flowers piercing through the cold ground in advance of their leaves, especially happy on sandy soils in summer shade. Darkly shiny bulbs.

Mar/April
125-14

↔ 3-4" (8-10cm)
6" (15cm)
£7.00 for 10 or £16.50 for 25



Plants we list which have received the RHS Commendation 'Award of Garden Merit' are now tagged with the trophy symbol. Space does not allow us to add the hardiness rating - please be aware the award applies to the ease of cultivation, excellence and constitution, but not necessarily hardiness.

↔ = suggested plant spacing
in garden situations

Flowering time	Flowering height
Item Code	Price



Triteleia Corrina



Triteleia Foxy



Triteleia Rudy



Triteleia Silver Queen

TRITELEIA

Early summer flowering bulbs, also known in the past as *Brodiaea* but now more accurately *Triteleia*. They come from north-west America. So often we are told that they look like miniature *Agapanthus*, to which they are unconnected. Their papery flowers are a lasting pleasure, with up to 25 flowers per stem. Plant in well-drained soil and in good light, 4" (10cm) deep and 2" (5cm) apart.

CORRINA

A dark flowered form, creating a haze of deep blue when viewed from a distance. Wiry stemmed and a deep blue that anticipates the *Agapanthus* season to come.

↔ 2-3" (5-8cm)

June 18" (45cm)
68-06 £3.30 for 15 or £4.80 for 25

FOXY

White flowered with a purple blue marking up the centre of each petal, effectively more striped than Rudy which shows more blue. Carol Klein loved them at the Gardeners' World Show in 2017.

↔ 2-3" (5-8cm)

June 18" (45cm)
68-15 £5.00 for 5 or £13.50 for 15

RUDY

The same shape and stance as T. Corrina but white flowered with a broad violet blue stripe down the centre of each petal. Very eye-catching and 'different' with a long vase life for when you feel that you have enough to pick.

↔ 2-3" (5-8cm)

June 18" (45cm)
68-07 £4.00 for 5 or £11.50 for 15

SILVER QUEEN

White with a green rib, perfect for the garden, or to use as cut flower? Just the thing to plant in a sunny border ahead of a summer wedding, given a bit of advance warning?

↔ 2-3" (5-8cm)

June 18" (45cm)
68-13 £3.80 for 5 or £10.50 for 15



Tulipa bakeri Lilac Wonder

SPECIES TULIPS

The species types tend to have small bulbs, typically about the size of an almond. They are particularly grown for their bright bold colours in late April and early May and because they persist from year to year (even increasing in the right conditions) better than do the bigger hybrid forms. In villages nearby there are examples that I see growing and spreading. They are sun lovers and don't want it too wet, particularly in the summer when the bulbs are resting. They are attractive to mice and squirrels looking for the high levels of the carbohydrates in the autumn, if that might be a problem there is mention (under the *Crocus* heading) of a way of keeping them protected and the same applies here.

BAKERI LILAC WONDER

Silvery pink with a yellow bull's eye in the centre of each multiheaded flower, held above broad, deep green, glossy leaves. A dependable sun loving plant closely related to T. saxatilis.

↔ 3" (8cm)

Mid-Late April 6" (15cm)
131-53 £3.00 for 10, £6.50 for 25 or £11.00 for 50



Plants we list which have received the RHS Commendation 'Award of Garden Merit' are now tagged with the trophy symbol. Space does not allow us to add the hardiness rating – please be aware the award applies to the ease of cultivation, excellence and constitution, but not necessarily hardiness.



Tulipa batalinii Bronze Charm



Tulipa clusiana Cynthia



Tulipa clusiana Peppermintstick



Tulipa batalinii Salmon Gem



Tulipa batalinii Honky Tonk



Tulipa humilis Lilliput

BATALINII BRONZE CHARM

Apricot yellow with increased bronzing on the petals in sunnier conditions. Grey-green leaved. A really endearing small tulip with poise and character. Gravely soils or planted into a well-drained rockery would be perfect.

↔ 2-3" (5-8cm)

Mid-Late April 10" (25cm)
131-08 £4.20 for 5 or £11.80 for 15

BATALINII SALMON GEM

Pinkish red within the flower with a contrasting paler, dusty pink reverse to the petal. Grey-green leaved. Again, for well drained conditions in good light.

↔ 2-3" (5-8cm)

Mid-Late April 10" (25cm)
131-146 £4.50 for 5 or £12.80 for 15

BATALINII HONKY TONK

Pale yellow flowered above grey-green foliage. The Tulipa batalinii group are closely related to the red flowered T. linifolia and may be botanically indistinguishable.

↔ 2-3" (5-8cm)

Mid-Late April 10" (25cm)
131-03 £3.00 for 5 or £8.20 for 15

CLUSIANA CYNTHIA

We have some of these are growing and flourishing in some rough grass here - somewhat to my surprise, but given good light and a drier summer rest they have performed well. This form is yellow behind the pink flush.

↔ 2-3" (5-8cm)

April 10" (25cm)
131-167 £3.00 for 5 or £8.20 for 15



CLUSIANA PEPPERMINTSTICK

The furled petals look like a little stick of edible rock which, when open, are ivory white inside with a violet eye, the backs of the petals are blushed cerise pink. The whole effect is lovely but do remember that all the clusiana forms have reasonably large flowers on quite slender stems so do plant them in sunny conditions where it is not too windy.

↔ 2-3" (5-8cm)

April 10" (25cm)
131-02 £3.00 for 5 or £8.20 for 15

HUMILIS LILLIPUT

Almost flowering at ground level and in flower thereafter for ages as the stem length increases slightly. A glossy, deep crimson red with a dark centre.

↔ 2-3" (5-8cm)

March /April 4" (10cm)
131-15 £3.00 for 5 or £8.20 for 15

↔ = suggested plant spacing
in garden situations

Flowering time Item Code	Flowering height Price
-----------------------------	---------------------------



Tulipa humilis Persian Pearl



Tulipa Little Beauty



Tulipa praestans Shogun



Tulipa linifolia



Tulipa Little Princess



Tulipa sprengeri

HUMILIS PERSIAN PEARL

This is a selected form which comes from Turkey and eastwards, all the family has low leaves nearly flat to the ground and colourful flowers. They need full sunlight to stay compact. Deep magenta rose coloured flowers with silvery backed petals

↔ 2-3" (5-8cm)

April
131-12 £3.50 for 5 or £9.80 for 15

LINIFOLIA

A crimson- red flowered, low growing small tulip with red margins to the wavy edged leaves. Suitable for any sunny well drained garden site.

↔ 2-4" (5-10cm)

Mid-Late April
131-26 £2.50 for 10, £5.50 for 25 or £10.00 for 50

LITTLE BEAUTY

Growing wild in much the same area as T. humilis these have shockingly bright crimson-pink flowers which open wide in the sun to reveal white and blue centres which is slightly startling. For a sunny well drained site again.

↔ 3-4" (8-10cm)

Mid-Late April
131-27 £3.50 for 10, £7.80 for 25 or £14.50 for 50

LITTLE PRINCESS

Of complex parentage but similar to the T. humilis forms above these exhibit fiery coppery-orange coloured flowers, goblet shaped before opening fully in the sun. The flowers are on short stems so are pretty resilient, a really cracking good dwarf tulip for a sunny spot.

↔ 3" (8cm)

Mid-Late April
131-05 £3.00 for 5 or £8.20 for 15

PRAESTANS SHOGUN

Not as dwarf as most of the other forms in this section but still earlier to flower than any of the larger hybrids. A remarkable colour for a tulip, multiheaded in a clear pale Marigold orange.

↔ 2-3" (5-8cm)

March/April
131-07 £3.00 for 10 or £6.50 for 25

SPRENGERI

Wonderful in early summer if you can get shafts of light to pick out the rich gold, verdigris and crimson colours. They will naturalise in many situations, either in shade or sun, but resent disturbance as young plants. They are an enigmatic and emblematic tulip, but we always seem to be short of them so do order early. They flower from small bulbs.

↔ 3" (8cm)

April/May
131-35 £6.00 each

Gardening Which? reported on a survey of Plant and Bulb suppliers in April 2021.

They surveyed just over 5000 of their members and needed a response rate of 30 to include a business in their ratings.

"Although this small, family-run bulb supplier didn't receive enough responses for star ratings in some of our survey categories, it makes it into the top bracket due to its customer satisfaction and recommendation score. Nine in 10 members who bought from Avon Bulbs would recommend it to others. Packaging, plant quality and value for money scored five, four and four stars respectively (out of five). The website is arranged by planting season with plants listed alphabetically and accompanied by large pictures. Avon Bulbs has also won 30 Chelsea Gold Medals."



Tulipa sylvestris



Tulipa turkestanica



Tulipa Exotic Emperor



Tulipa tarda



Tulipa whittallii



Tulipa Flaming Purissima

SYLVESTRIS

Easy to grow, and possibly the only one that will persist in some shade, but naturally rather shy to flower. We have some that have increased happily under an Amelanchier for 10 years or so, flowering intermittently as seems to be their nature. The flowers are sulphur yellow and fragrant.

↔ 4" (10cm)
12" (30cm)

April
131-37 £6.80 for 10 or £15.80 for 25

TARDA

A perennial performer with larger, very rounded fat bulbs which produce multiple flowers from each bulb, all crammed together. Honey scented in a deep golden yellow, edged in white. Pretty bulbs to plant in a sunny site. Easy and persisting.

↔ 3" (8cm)

Mid-Late April
131-38 £2.50 for 10, £5.50 for 25 or £10.00 for 50

TURKESTANICA

Ivory and cream coloured within the flower with dark anthers contrasting with the petals, greenish tinged on their backs. It is widespread in its natural range from SE Europe through to Iran and Russia. Growing away early and quite tall they need bright conditions out of too much wind. Oddly red bulbed.

↔ 2-3" (5-8cm)

April
131-134 £3.00 for 10, £6.50 for 25 or £11.00 for 50

WHITTALLII

Named after Edward Whittall, a plant collector extraordinaire who amassed many such treasures of around Izmir in Turkey where there is still a famous garden named after him. These are a gorgeous bronzy orange with a dark centre and would love sunny conditions in a raised bed or rockery.

↔ 3" (8cm)

April
131-42 £4.50 for 5 or £12.50 for 15



FOSTERIANA TULIPS

(Group 13) Earlier flowering than the main Tulip display, large flowered on sturdy stems and available in lovely pastel colours. They need planting about 5" (12cm) apart and are equally suitable for containers or borders.

EXOTIC EMPEROR

Double petalled in white and when about to flower somewhat rose-like with the white buds clasped by intriguing green bracts. Where we have seen it in gardens it has persisted for years on thin stoney soil.

↔ 5" (12cm)

April
131-100 £7.50 for 10, £17.50 for 25 or £32.50 for 50

FLAMING PURISSIMA

Creamy white when they first open with just a hint of pink at the edges of the petals. This becomes increasingly dominant as the flower matures, feathering gracefully in from the edge of the petals which are eventually mostly red when fully developed, with dark anthers.

↔ 5" (12cm)

Mar/April
131-71 £7.00 for 10, £16.25 for 25, or £30.00 for 50



Plants we list which have received the RHS Commendation 'Award of Garden Merit' are now tagged with the trophy symbol. Space does

not allow us to add the hardiness rating – please be aware the award applies to the ease of cultivation, excellence and constitution, but not necessarily hardiness.

↔ = suggested plant spacing in garden situations

Flowering time
Item Code

Flowering height
Price



Tulipa Orange Emperor



Tulipa Annie Schilder



Tulipa Brown Sugar



Tulipa Purissima



Tulipa Barcelona



Tulipa Calgary

ORANGE EMPEROR 🏆

One of my favourites with quite long flowers in pale orange with pretty green shading at the base. Good for bold contrast and great in combination planted with Purissima for an early flowering twosome. Picture taken at Great Dixter.

↔ 5" (12cm)

Mar/April 16" (40cm)
131-72 £7.00 for 10, £16.25 for 25,
or £30.00 for 50

PURISSIMA 🏆

Opening a pale primrose yellow, about which we receive a number of phone calls each year wondering whether a packing mistake has occurred, they turn through creamy shades to pure white and then in late March sunshine they open wide to reveal dramatic mascara black anthers. Strong stemmed over bright green leaves.

↔ 5" (12cm)

Mar/April 18" (45cm)
131-16 £7.00 for 10, £16.25 for 25,
or £30.00 for 50

MID SEASON TULIPS

These Triumph (Group 3) and Darwin (Group 4) tulips all have roughly the same flowering season - we used to say mid to late April and early May, but in our fickle climate this is just a guide, they are now often earlier flowering and the frequency of that happening seems to only increase. These would be planted about 5" (12cm) apart and are very well suited to the open garden in borders, or containers.

↔ = suggested plant spacing
in garden situations

Flowering time Item Code	Flowering height Price
-----------------------------	---------------------------

ANNIE SCHILDER

Warm rose-orange when in bud then the flower opens and pales to a lighter shade with some yellow at the petal edges. Broadly bowl shaped with a lovely perfume that seems to come with many of the orange tulips. Dating back to the 1920s this is one that has been around a while.

↔ 5" (12cm)

April 18" (45cm)
131-135 £7.00 for 10, £16.25 for 25,
or £30.00 for 50

BARCELONA 🏆

Outstanding at Keukenhof when I visited and took this photograph, with strong stems and a very vibrant pink flower. It made the shortlist straight away.

↔ 5" (12cm)

April 18" (45cm)
131-159 £8.30 for 10, £19.50 for 25
or £36.50 for 50

BROWN SUGAR

Difficult to pin down in colour terms, bronzed apricot or coppery pink perhaps, with some purple on the reverse. Much taller than many but strong stemmed with a beautiful perfume.

↔ 5" (12cm)

April 18" (45cm)
131-142 £7.50 for 10, £17.50 for 25
or £32.50 for 50

CALGARY 🏆

Very short and compact with waxy white flowers that are brilliant in exposed conditions, shrugging off any wind and rain, lasting brilliantly. We use them at the edges of our exhibits and you could use them in the same way in the garden or containers.

↔ 5" (12cm)

April 9" (22cm)
131-48 £8.30 for 10, £19.50 for 25
or £36.50 for 50



Tulipa Calgary Flames



Tulipa Grand Perfection



Tulipa Hemisphere



Tulipa Flaming Flag



Tulipa Havran



Tulipa Jan Reus

CALGARY FLAMES



A variant on the Calgary model with a prominent yellow flush to the outer petals, we find them useful at flower shows as with such short stems they do not flop over during the show, so at the front of borders or close to the edge in big pots these too could lift your display?

↔ 5" (12cm)

April
131-136 £8.30 for 10, £19.50 for 25
or £36.50 for 50

FLAMING FLAG

White with broad raspberry flames from the base. The white with crimson mix is like an expensive ice cream, absolutely perfect in combination with the pink and white apple blossom that is out at the same time. A few of these tulips go a long way.

↔ 5" (12cm)

April
131-168 £6.00 for 10, £13.75 for 25,
or £27.50 for 50

GRAND PERFECTION



Exhibiting broad flashes of red over what is, when they first open, quite a yellow background. This soon turns white for a stronger raspberry and vanilla contrast. Reminiscent of the tulips illustrated in the paintings by the Dutch Masters at the height of the Tulip mania.

↔ 5" (12cm)

April
131-123 £7.00 for 10, £16.25 for 25,
or £30.00 for 50

HAVRAN

Darker than plum in some lights, with a grape like bloom dusting the petals, these are not quite as dark as Queen of Night but have a more pointed shape and would open earlier, so these could start off your dark theme. Quite often they have more than one flower to a stem.

↔ 5" (12cm)

April
131-57 £7.50 for 10, £17.50 for 25
or £32.50 for 50

HEMISPHERE

These change colour as the flowers mature so the effect is one of gradual evolution, each flower developing its freckling and faint stripes at a slightly different rate. The whole result is a range of warm colours from white through to raspberry. Most tulips are pretty uniform, these are less so, which I like, but do plant enough of them to get the effect.

↔ 5" (12cm)

April
131-137 £8.30 for 10, £19.50 for 25
or £36.50 for 50

JAN REUS

Deep purple-red when first open, fading to a ruby red with petals that shimmer in the sun atop a dark strong stem that adds to the impact. They combine with just about everything, especially the acid green foliage of emerging Euphorbia.

↔ 5" (12cm)

April
131-62 £7.00 for 10, £16.25 for 25
or £30.00 for 50



Plants we list which have received the RHS Commendation 'Award of Garden Merit' are now tagged with the trophy symbol. Space does not allow us to add the hardiness rating – please be aware the award applies to the ease of cultivation, excellence and constitution, but not necessarily hardiness.



Have a look at our **Tulip Collections** on pages 57 & 65, they offer savings of about 10%



Tulipa Mistress



Tulipa Paul Scherer



Tulipa Sanne



Tulipa Negrita



Tulipa Prinses Irene



Tulipa Sunny Prince

MISTRESS

A clear strong pink with simple flowers they remind me of an old favourite now unobtainable called Douglas Bader which also showed very well.

April
131-162 £7.00 for 10, £16.25 for 25,
or £30.00 for 50

↔ 5" (12cm)

20" (50cm)

NEGRITA

One might imagine Negrita to be darker than the name suggests? This is a lovely purple tulip with beetroot veining running through the petals, strong stemmed too.

April
131-149 £6.00 for 10, £13.75 for 25,
or £27.50 for 50

↔ 5" (12cm)

18" (45cm)

PAUL SCHERER



Strong stemmed, with slightly grey-green foliage contrasting with the exceptionally dark cup-shaped flowers. I love the possibilities that tulips provide to play with colours in a way that no other plants allow. As dark as Queen of Night and probably with a stronger stem these are better than dark chocolate.

April
131-107 £7.50 for 10, £17.50 for 25
or £32.50 for 50

↔ 5" (12cm)

18" (45cm)

PRINSES IRENE



An earthy mix of oranges, marmalade and purple, but unlikely as it seems they work brilliantly together. This is a great favourite, with low reddish marked leaves and on short stems it is less affected by poor weather. Add in a huge scent and one can see why it is so popular. See also 'Orange Princess' which is a double form of the same tulip.

April
131-10 £7.50 for 10, £17.50 for 25
or £32.50 for 50

↔ 5" (12cm)

15" (38cm)

SANNE



Pale apricot when they first open with a pinkish tinge added to the mix as they mature, the tips of the petals always slightly paler. Soft, feminine and subtle with a great shape.

April/May
131-122 £8.30 for 10, £19.50 for 25
or £36.50 for 50

↔ 5" (12cm)

18" (45cm)

SUNNY PRINCE

Bright butter yellow within the flower, slightly paler on the backs of the petals, this is a relatively short, sturdy form seemingly filled with happiness.

April
131-143 £6.00 for 10, £13.75 for 25
or £27.50 for 50

↔ 5" (12cm)

14" (34cm)



Tulipa Unique de France



Tulipa Antoinette



Tulipa Clearwater



Tulipa Angel's Wish



Tulipa City of Vancouver



Tulipa Queen of Night

UNIQUE DE FRANCE

Amazingly vibrant - shiny and gleaming like a newly painted pillar box, certainly one of the most deeply coloured tulips but most unique is its foliage - the leaves are deep green and very waxy, quite different from any other tulip's foliage. Good for the garden or containers where they will be noticed!

↔ 5" (12cm)
16" (40cm)
April
131-121 £7.00 for 10, £16.25 for 25
or £30.00 for 50

SINGLE LATE TULIPS

(Group 5) These have simple, elegant cup or goblet shaped flowers and longer stems, flowering after the mid season tulips (but overlapping with them).

ANGEL'S WISH

White with creamy yellow. Simple looking with broad petals and a strong stem. A great white, rather bigger flowered than City of Vancouver.

↔ 5" (12cm)
18" (45cm)
April/May
131-32 £7.50 for 10, £17.50 for 25
or £32.50 for 50



ANTOINETTE

A chameleon tulip which starts greenish-yellow then fades to creamy-yellow with a hint of pink and finally turns salmon pink with a touch of orange. With a multi headed nature this provides lots of flower and continual development and interest.

↔ 5" (12cm)
20" (50cm)
April/May
131-153 £8.30 for 10, £19.50 for 25
or £36.50 for 50

CITY OF VANCOUVER

Pale creamy yellow and turning paler as they age. Simply gorgeous.

↔ 5" (12cm)
20" (50cm)
April/May
131-156 £7.00 for 10, £16.25 for 25
or £30.00 for 50

CLEARWATER

You can never have enough white Tulips. Either on their own or alongside any of the other colours they are always special. A simple shape and pure white.

↔ 5" (12cm)
16" (40cm)
April
131-170 £8.30 for 10, £19.50 for 25
or £36.50 for 50

QUEEN OF NIGHT

One of the darkest delights, and justifiably one of our best sellers. Though not quite black, only Paul Scherer comes close. The deepest hue shows on bulbs in direct sunlight, in more shade they are deep purple and often taller.

↔ 5" (12cm)
24" (60cm)
April/May
131-58 £6.00 for 10, £13.75 for 25
or £27.50 for 50

↔ = suggested plant spacing
in garden situations

Flowering time Flowering height
Item Code Price



Tulipa Ballerina



Tulipa Fly Away



Tulipa Madalyn



Tulipa Elegant Lady



Tulipa Firework



Tulipa Greenstar



Tulipa Merlot

LILY FLOWERED TULIPS

(Group 6) Characterised by their longer stems and that refined 'hour glass' shape to the flower, waisted when in bud and opening up in the sun with pointed tips. They are great in flower borders, and in tall containers which seem to exaggerate the stem length.

BALLERINA

Soft tangerine coloured flowers, though different lights and differing levels of UV light seems to result in some variation in the shade from year to year. One of my favourites (and in that I am not alone), I particularly love its scent when warmed in the sun. The tangerine hue also goes perfectly with all the leafy greens, altogether very eye-catching with a heady perfume.

↔ 5" (12cm)

April/May 20" (50cm)
131-65 £7.00 for 10, £16.25 for 25
or £30.00 for 50

ELEGANT LADY

Pale ivory yellow with pale pink edging, refined and elegant.

↔ 5" (12cm)

April/May 24" (60cm)
131-78 £7.00 for 10, £16.25 for 25
or £30.00 for 50

FIREWORK

A bright and zingy combination of strong yellow petals with a bright red flare up the centre of each petal. Not particularly tall so perhaps a better choice for windy sites?

↔ 5" (12cm)

April/May 16" (40cm)
131-63 £8.30 for 10, £19.50 for 25
or £36.50 for 50

FLY AWAY

Much more apparently 'Lily flowered' with the typically pointed silhouette, the band of yellow is narrower and the red rather more pronounced.

↔ 5" (12cm)

April/May 22" (55cm)
131-164 £7.50 for 10, £17.50 for 25
or £32.50 for 50

GREENSTAR

I saw these at Keukenhof on a busy day there, it was heaving with people and I had trouble getting close to take a shot of these tulips without people in the way because everyone else was taking selfies in front of them. They are extraordinary, very angular, vase shaped and strongly green marked.

↔ 5" (12cm)

April/May 20" (50cm)
131-165 £9.00 for 10, £21.25 for 25
or £40.00 for 50

MADALYN

Most impressively coloured with vibrant pink over most of the petal and a base of green, the flowers splay open very dramatically and widely. It was also being hugely admired in Holland.

↔ 5" (12cm)

April/May 20" (50cm)
131-166 £9.00 for 10, £21.25 for 25
or £40.00 for 50

MERLOT

Tall and elegantly poised with flowers that mimic a large wine glass in both shape and content, there is no doubt about how the name arose.

↔ 5" (12cm)

April/May 28" (65cm)
131-130 £7.50 for 10, £17.50 for 25
or £32.50 for 50



Tulipa Pieter de Leur



Tulipa Cummins



Tulipa Lambada



Tulipa Trés Chic



Tulipa White Triumphator



Tulipa Honeymoon



Tulipa Pacific Pearl

PIETER DE LEUR

Glistening, vibrant, deep vermillion red, almost opalescent as a ruby tiffany lamp, not a tulip for the faint hearted but then these are showy tulips doing what they do best! My father's favourite with his dimming eyes.

↔ 5" (12cm)
18" (45cm)

April/May
131-150 £7.00 for 10, £16.25 for 25
or £30.00 for 50

TRÉS CHIC

Creamy white when in bud, becoming white with faint green tips to the pointed petals as they open properly, sometimes with pink splashes as well. Much shorter in stature, which in exposed gardens or in some planters may be an advantage. A tulip that lives up to its name.

↔ 5" (12cm)
12" (30cm)

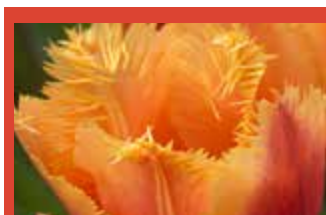
April/May
131-66 £7.50 for 10, £17.50 for 25
or £32.50 for 50

WHITE TRIUMPHATOR

All white with long clean green stems. An iconic and popular tulip, but not so typically lily flowered in its shape. They seem always more dramatic when provided with a darker background against which to view them.

↔ 5" (12cm)
20" (50cm)

April/May
131-46 £7.50 for 10, £17.50 for 25
or £32.50 for 50



Have a look at our Tulip Collections on pages 57 & 65, they offer savings of about 10%



FRINGED TULIPS

(Group 7) First popular in the florist shops these are fringed by frills along the edges of the petals, they are not just frivolous though, they provide a contemporary twist.

CUMMINS

Dove grey in some lights, a pale lilac purple in others, with a deep white frosting around the edges of the petals.

↔ 6-8" (15-20cm)
15" (38cm)

April/May
131-88 £9.00 for 10, £21.25 for 25
or £40.00 for 50

HONEYMOON

Creamy white, sometimes with a tinge of green and edged in a sparkling white, frosted fringe. A cracking tulip that looks as though it has just been drawn from the ice bucket.

↔ 6-8" (15-20cm)
15" (38cm)

April/May
131-95 £8.50 for 10, £19.50 for 25
or £36.50 for 50



LAMBADA

A fringed apricot - rose coloured tulip with perhaps a hint of orange as well. A bit shorter with a smaller head.

↔ 6-8" (15-20cm)
18" (45cm)

April/May
131-151 £7.00 for 10, £16.25 for 25
or £30.00 for 50

PACIFIC PEARL

Gorgeous against the light when the richness of the colour shows at its best, and the frilly edge means that you can mix them with any of the other unfringed ones and find that they complement each other hugely.

↔ 6-8" (15-20cm)
18" (45cm)

April/May
131-152 £7.00 for 10, £16.25 for 25
or £30.00 for 50

↔ = suggested plant spacing
in garden situations

Flowering time
Item Code

Flowering height
Price



Tulipa Black Parrot



Tulipa Spring Green



Tulipa Foxtrot



Tulipa Rococo



Tulipa Angelique



Tulipa Orange Princess

PARROT TULIPS

(Group 10) Exuberance is the greatest asset of this group, with flowers that seem to be overflowing with frilled or fluted petals. Dramatic is the best way to describe them I feel. Wonderful to use as part of a fantastical flower arrangement. Big and heavy headed, best in good light and in some breeze which will shake the rain from the multitudinous petals.

BLACK PARROT



The unopen flower buds seem to be clutched in a green fingered grip and when it escapes to flower the dark chocolate purple petals seem to erupt in a cockscomb of frilled excess, a dark favourite indeed.

↔ 5" (12cm)
20" (50cm)

April/May
131-17 £7.50 for 10, £17.50 for 25
or £32.50 for 50

ROCOCO

Earlier than most other Parrot tulips with short stems, these are deep velvety red with the reverse of the petal marked with green, the petals tightly crimped as though they had been gripped too tight in the bud, very suitable for pots.

↔ 5" (12cm)
12" (30cm)

April
131-127 £7.00 for 10, £16.25 for 25
or £30.00 for 50

VIRIDIFLORA TULIPS

(Group 8) Multi-coloured tulips with vertical colour banding, most often in green. Some exhibit complicated colour patterning, like an artist's mixing palette. In the borders they provide great opportunities to create subtle combinations.

SPRING GREEN



Pale apple-white petals marked with wispy green brush strokes on the back of each petal. Often less 'regular' in height and flower shape compared to many other tulips but ideal for separating strong colours in the border or for flower arranging. One of the all-time favourites.

↔ 5" (12cm)
18" (45cm)

April/May
131-51 £7.50 for 10, £17.50 for 25
or £32.50 for 50

DOUBLE PETALLED TULIPS

(Group 11) Also known as the Paeony flowered forms. These tend to be late flowering with more spherical buds and rounded flower shapes, filled with deep layers of petals.

ANGELIQUE



Often multi-headed, the flowers filled with ruffled petals in delicate shades of pink, genuinely paeony-like from a distance, somewhat shorter in stature than most. Late flowering beauties for borders as well as cut flower.

↔ 5" (12cm)
16" (40cm)

April/May
131-24 £8.30 for 10, £19.50 for 25
or £36.50 for 50

FOXTROT



An early flowering double in old rose pink which deepens in colour as the flowers age. Tidy and neat and much earlier flowering than the similar Angelique.

↔ 5" (12cm)

April
131-147 £7.50 for 10, £17.50 for 25
or £32.50 for 50

ORANGE PRINCESS



I was tempted to list this alongside Prinses Irene, it is after all a double form of that favourite tulip. But being a double this is where it fits best and if you love the single form you will recognise the similarity and perhaps be tempted to try them? I find the encircling green tipped petals rather appealing.

↔ 5" (12cm)

April/May
131-140 £9.00 for 10, £21.25 for 25
or £40.00 for 50

↔ = suggested plant spacing
in garden situations

Flowering time Flowering height
Item Code Price

Ideal as
Gifts

2021 Collections

Colour Themed or Seasonal Tulip Collections.
10 of each of 4 varieties for planting in pots or the garden.

Collection 404 - Dreamy Tulip Collection

999-404

£28.50

Tulipa Angelique x 10



Tulipa Hemisphere x 10



Tulipa Sanne x 10



Tulipa Mistress x 10

Collection 407 - Fiery Tulip Collection

999-407

£26.00

Tulipa Annie Schilder x 10



Tulipa Barcelona x 10



Tulipa Pieter de Leur x 10



Tulipa Lambada x 10

Saving more than 10% on individually purchased items

Collection 406 - The Wine Box Tulip Collection

999-406

£25.00



Tulipa Angel's Wish x 10



Tulipa Merlot x 10



Tulipa City of Vancouver x 10



Tulipa Negrita x 10

Peat Free?

There is a lot of discussion in the Press and elsewhere about the use of peat in horticulture. We did use a proportion of peat in our own compost mix until fairly recently but have over the years been reducing that proportion and replacing it by coir in particular as well as bark based materials. This has been reasonably successful and we have now not used peat for a while. A consequent issue is that in horticulture this move has put a great deal of pressure on the supply of alternative materials. Coir and other products made from composted bark are in very short supply even at a time when we are potting very little. What will happen when we are potting more in the autumn in particular I am not sure. We shall order well in advance and hope to receive what we need.

Mulches

In the same vein we are experimenting with soil covering mulches which are used to both suppress weed seeds germinating in our nursery beds, to make the removal of such weeds rather easier and to conserve moisture, particularly in the summer when we notice that the Blackdown Hills to our south-west seem to push the rain north and south of us, creating a mini rain shadow area!

We are now using a mulch which is one end product of an Anaerobic Digester nearby. There is a huge industrial unit that 'digests' vegetable matter to produce gas to feed into the National Grid and to power electricity generators. Their raw material includes chicken shed waste, potato waste and huge quantities of maize cut and stored in enormous outdoor clamps to provide material year round. I am a critic of the maize production – in particular its scale, the characteristics of maize that make it rather 'alien', the reliance on huge machinery required to cut and haul it at a time of year when the soil is readily damaged, as well as the fact that the fields are then bare for the winter all seem to me to be at odds with good agricultural practice. It is an industry that is largely supported on subsidies as we work out how to reduce our reliance on fossil fuels, so its economics are skewed. But I am conflicted in that we use a tiny amount of their waste! 100 tonnes of material go into the plant every day, we have used about 20 tonnes of biodigestate this year – and for that purpose it seems to work rather well.



Mesh Baskets

We have long suggested the use of aquatic baskets to contain special bulbs in the garden. This helps to keep them from 'wandering', means that you can move them all at once without excessive disturbance (and your own home-made lid) offer protection from pests. The plants within can root out into the surrounding soil but not escape. Good for small bulbs and special snowdrops. These are rugged and long lasting pots from the Finofil range.

We can offer 2 sizes, both cylindrical:

14 cm diameter x 10 cm deep (1 litre)

668-02

3 for £4.00

23 cm diameter x 13 cm deep (3.5 litre)

669-03

£2.00 each or 3 for £5.00

New Unused Snowdrop Pots

We recycle and reuse the pots in which the snowdrops have been grown, but we do get asked for pots by keen Galanthophiles who might be growing their own snowdrops to

sell or give away. We try not to encourage the growing of snowdrops in pots long term, but of all the pots we have used over the years these seem the most suitable for single snowdrop bulbs. They are 9cm square and 12.5cm deep with good drainage holes and of a robust construction and only available in black!

Sent with any order they will not incur additional postage charges, sent alone please allow £3.00

Snowdrop Pots

668-01

£2.80 for 10



ORDERING FROM AVON BULBS

Generally: This catalogue is **valid** through the remainder of 2021 and expires in December. The **prices** are for single bulbs unless it says otherwise, and can be found under each description. **VAT** is included in our prices at the prevailing rate. Please remember that this catalogue was written in June when bulbs we offer are listed in the expectation, not the certainty, that we can supply them. Nature, the weather, and the perishability of living bulbs means that we sometimes cannot supply things that we list, despite our best intentions. If that happens we make **no substitutions** for items out of stock without contacting you for authority unless they are from our Collections, within these we do make suitable substitutions if required.

If, when you get your parcel, you are concerned at all by its contents please contact us as soon as you can. We do occasionally make mistakes, but we do make no specific guarantees about our bulbs except that we believe them to be viable, suitable and correctly named. We cannot **guarantee** flowering - though we would expect it in the first season from the vast majority of the bulbs supplied under reasonable growing conditions.

Ordering: You can order by post or phone. Alternatively you can browse this catalogue but place your order online using the Quick Order facility on our website. Whichever way you do it we will **acknowledge** your order, ideally by email but if not, by post. Please check that your order has been correctly entered onto our system.

Paying: Please provide a means of payment with your order. This could be your **credit or debit card** details (the card payment is then taken as the parcel is despatched), similarly a **Not to Exceed cheque** – made out like a normal cheque but undated and with no values. Across the top of the cheque you instead write “Not to Exceed £XX” where the value is a slightly greater than the amount you expect to pay. We will then complete it at the time of despatch for the correct total. Or a normal **cheque** for what you believe is the right amount (which we will bank when the order is placed). If the card payment is not authorised at the point of despatch your order will be held up whilst we contact you and obtain your correct card details.

Delivery – When? There may be some delay before we can send you your order. Orders are dealt with in receipt order in their season and when all the items are ready to be sent.

How much? The basic **postage charge** is £5.95 for all parcels within mainland UK, but there are exceptions. For addresses in the Scottish Highlands, the Scottish islands and Island destinations such as the Channel Islands, Isle of Wight, Isle of Man and Scillies we may need to add a surcharge dependant on parcel weight, these are generally sent sent by Royal Mail or ParcelForce, but these require a trip to the Post Office 3 miles away.

In detail: ‘Mainland’ UK: Parcels under 2 kg are sent by the Royal Mail. Parcels heavier than 2 Kg will be sent to mainland UK addresses with our carriers, DPD, on a next working day service (no deliveries on a Saturday). Providing us with your **email address** will result in a message from us to confirm despatch of the parcel (whoever the carrier) and will also result (for the parcels sent with DPD) a further advisory message to allow you to track the delivery. From DPD also (if you provide a **mobile telephone number**) you will be sent a text message telling you exactly when your parcel will be delivered (to within an hour) and you can reply to this to change that time slot. Whichever service we use we do recommend that you provide us with **Safeplace** leaving instructions. The delivery will then not require your signature but will be left where you nominate.

Other ‘Mainland’ Destinations

For Destinations in the Highlands and Islands and the remoter parts of Britain: see the paragraph under How Much?

Europe & Northern Ireland: Sadly, due to the cost of phytosanitary inspections and other issues we are not accepting orders from Europe or Northern Ireland.

Collecting your Order: You may like to collect your order from the nursery or at a show we are attending (with two weeks’ notice preferably) and avoid a delivery charge. This can be arranged for a mutually convenient moment when the bulbs are available. Please arrange such collections before the end of October.

Five year Diaries!

This remarkable diary really is a real memory builder!

As you fill one entry you cannot help but look back to what you wrote on the same day in past years. Keeping a record year on year of the weather for the day can really help you understand your garden and its microclimate, as well as remind you of your gardening successes and lessons to learn. But you can also include films you saw, books you read, how much jam you made, who called for a chat or came to dinner, what you ate, what the grandchildren told you, the list is endless!

We have very few of the original design using Susan Ogilvy’s illustrations left and will have to reprint the diary this year. We have taken the decision after 25 years and two reprints to make a change to the illustrations. The idea is to use them to promote a range of artists and to give them each a page to display their own particular ideas. The remainder of the book works well just as it is, and will remain at 6” wide (15 cm) and just over 9” deep (23.5 cm) and weighing 770g these are provided in a purpose made delivery sleeve and can be posted at any time (they make great Christmas presents) but can be started at any time of year. Unique to ourselves and not available elsewhere. These illustrations are of the first design.

£20.00 including P&P (within UK)



Seeds from Avon Bulbs

We have a seed box which travels to the shows and from which customers can pick out seed packets that they might like to purchase. The range is small and generally reflects the plants that we have grown and are showing to associate well with the bulbs on the display (but the annuals flower from seed very much more quickly than bulbs).

But many of our mail order customers do not see us at the shows and may like the chance to buy a packet or two? Availability may be limited depending on the demand at the shows!



Allium cernuum

Claret pink flowered plants of reasonably well drained locations in full sun. Of North American origin and hardy in the UK, self sown seedlings spreading and thickening one's clumps. Summer flowering about 18" (45 cm) tall with leaves that persist for much of the year. The flowers are good for beneficial insects. They may take 3 years to flower from seed, some will flower in their 2nd year



Camassia leichtlinii
'Avon's Stellar hybrids'

Hardy North American plants, Camassia all like heavy soils in sun or part shade. They flower in late April or early May, (after the blue flowered forms which produce little or no seed). The flowering plants are 24-26" tall (60-90 cm). Colours will vary - pink, lilac, blue, cream and green.



Cerinthe major
'Purpurascens'

A hardy annual from the Mediterranean region, known as Honeywort. An aristocratic border plant which is beautiful and versatile. It is adored by bees and is much favoured as a cut flower. It has glaucous leaves with interesting purple bracts and bell shaped flowers from May to September.



Dahlia coccinea
var palmeri

Single orange-red flowers in late summer on a plant which exhibits very dissected 'frothy' foliage. The plant can be large, the seed was collected from an established plant about 7' tall. Dahlias like a rich fertile soil and need planting in the sun. They may need a mulch (or to be lifted) in cold gardens, but the species forms seem harder than the hybrids. These should flower in their first season.



Gladiolus tristis

A beautiful South African species that flowers in April/May in Britain with wonderful pale straw coloured flowers with pretty green highlights and a good perfume in the evenings. 3-4' (30-40 cm) tall. They will need a sheltered situation in cold gardens or cold districts, but if they can be grown in a favoured spot they will set seed and increase. They are in leaf through much of the winter when they will cope with temperatures down to -3°C.



Nicotiana mutabilis
(Ornamental Tobacco)

A striking tender plant up to 5' (1.5m) with showers of white flowers which turn through pink to a deep magenta as they mature. The effect is spectacular with both colours present on the plant together. Flowers in the late summer. If a plant is overwintered (in frost free conditions) flowering is much earlier and more profuse the second year.



Nectaroscordum siculum

Closely related to Alliums (the ornamental onion), originally from Asia minor and Mediterranean these have tall smooth stems on which there open dangling bell shaped flowers in pink, purple and green. When dry they stand erect. The whole plant is very garlic scented when handled. They grow best in lighter soils in sun or part shade and are happy growing in grass. They flower in the early summer about 30" (75cm) tall.



Orlaya Grandiflora 🦋
(White Lace Flower)

A plant of meadows, vineyards and olive groves in the Mediterranean. Fern-like foliage and lace-like white umbels, with the outer petals larger than the inner. 18-24" tall (45-60cm). An easy to grow annual setting seed that you can collect and grow.



Pimpinella major rosea

Deep pink umbels of small flowers, they look like a pink flowered cow parsley. Blooms in May/June, ideally in the sun or light shade, 40" (100cm) tall. Sow the seeds in the autumn in ordinary garden soil or gritty compost (as they require chilling to break the dormancy) and overwinter the seed tray outside. They may not germinate until the spring. Prick out into small pots when the seedlings are large enough to handle and when these plants are large enough themselves plant into their final position.



Tulbaghia cominsii
x violacea

Long flowering perennial of South African origin. Long thin leaved foliage, onion scented when crushed. Purple — pink flowers from June to October, 18-24" (45-60 cm) tall. Seedlings may vary, due to the hybrid nature of the plant. Plants flower in their second year. Very good patio plants in planters, enjoying warm conditions and very drought tolerant. In cold areas mulch plants in the ground in winter and protect pots from extended freezing temperatures. Hardy outside to about -10°C.



P&P for any number of seed packets ordered alone within UK £1.50

Any packet
of seeds
£2.50



777-019

Average seed contents: 10

Lunaria annua Chedglow

Hardy biennial flowering April to early May with wonderful chocolate leaves and lilac flowers, growing to 3' (1 m) or a bit more. Decorative seed heads persist with translucent discs that can be used in dried arrangements.



777-028

Average seed contents: 10

Lunaria annua Corfu Blue

Hardy biennial, flowering in the spring often earlier than other Lunaria, with purple-blue flowers on purple flushed stems, growing to 3' (90cm) tall and a spread of up to 30" (75cm). The seed cases are distinctive as papery silvered seed heads. These may hybridise with other Lunaria close by. The leaves are browsed by rabbits.



777-013

Double Black



777-014

Double Lilac



777-011

Double Pink



777-012

Double Shiraz

Papaver somniferum

Fully double flower heads of various colours. June flowering about 36" (90cm) tall. May need staking in windy gardens. They are plants of open, sunny situations in well drained soil and are hardy, but annual, so you will be reliant on falling (or collected) seed for future years. Self fertile, but some slight variation in flower colour may occur.



777-017

Blackcurrant Fizz



777-023

Average seed contents: 30

Tulipa sprengeri 🌷

May flowering species tulip, now unknown in the wild. Red flowered, often verdigris marked on the outside with contrasting golden anthers. About 18" (40cm) tall. May take 3-4 years to flower, but avoid disturbance in the area. Once flowering will self seed. Bulbs flower when grape sized or larger.

Maxiflex Gardening Gloves

We have now extended the range of gloves that we offer. We previously only offered them in sizes 7 and 10, and whilst they are elasticated that was not good enough! They are now available in the intermediate sizes as well so remeasure your hands (details on the website) and see what now fits better and add a pair or two to your order? They remain at the exceptional price of **£6.50 each or £18.50 for 3.**



Measuring the circumference of your hand as indicated choose the size of glove you need:

Circumference " / (mm)	Glove Size	Item Code	Cuff Colour
7" (178 mm)	7	669-02	Red
8" (203 mm)	8	669-03	Orange
9" (229 mm)	9	669-04	White
10" (254 mm)	10	669-01	Yellow

P&P for any number of seed packets ordered alone within UK £1.50

2021 Collections

Themed Collections of Bulbs for autumn planting in pots or the garden.

Ideal as
Gifts

Collection 408 - Allium Collection

999-408

£19.00

Allium cristophii x 3



Allium Purple Rain x 5



Allium hollandicum x 10



Allium sphaerocephalon x 15

Collection 410 - Crocus vernus Collection

999-410

£26.50

Crocus vernus
Flower Record x 15

Crocus vernus
Golden Yellow x 15



Crocus vernus Jeanne D'Arc x 15

Crocus vernus Pickwick x 15

Saving more than 10% on individually purchased items

Collection 412: Compton Clumps Collection

999-412

£100.00

Based on an idea generated by this picture on Instagram by Tania Compton.

I feel that there might be people who are now mowing far less, so here is a planting idea to make an area of formerly mown lawn far more interesting early in the year. The coverage will depend on the spacing of your 'clumps' and most of the clumps will contain a different mix. We will provide some suggestions.

More than 300 bulbs in 12 varieties. With an average of 10 bulbs in a clump this will create about 30 clumps at £3.30 per clump.

- 10 **Hyacinthus Blue Jacket** (a smaller bulb size than those listed in the catalogue providing a smaller flower)
- 50 **Anemone blanda blue**
- 10 **Anemone blanda White Splendour**
- 50 **Camassia esculenta**
- 15 **Crocus Queen of the Blues**
- 15 **Crocus Remembrance**
- 15 **Fritillaria meleagris**
- 7 **Ipheion Alberto Castillo**
- 15 **Narcissus Topolino**
- 15 **Narcissus Thalia**
- 50 **Puschkinia libanotica alba**
- 50 **Scilla bifolia**



Please specify plants and costs here,
and complete the other side of the form.

You can include any Cyclamen and Iris unguicularis on pages 6-9 on this order form for Autumn despatch (whilst stock allow).

total

Please fold this sheet into a smaller envelope to avoid postal surcharges



Mail Order for Autumn 2021

Plants and bulbs to flower in the spring

Office use only:

Date received:

Order No:

AVON BULBS LTD • BURNT HOUSE FARM • MID LAMBROOK

SOUTH PETHERTON • SOMERSET • TA13 5HE

Title: Mr ☐ Mrs ☐ Miss ☐ Other _____

Name: _____

House Name/No: _____

Street: _____

Town: _____

County: _____

Country: _____ Postcode _____

Telephone/Mobile No: _____

Email address: _____

It may be helpful for us or the carrier to contact you if any problems arise.

Please complete these questions (We now need your permission to stay in touch, except with regard to this order)

By Post: Are you happy to receive our printed catalogues in the future? ☐ **Yes** ☐ **No**

By Email: Do you wish to receive occasional emailed Newsletter from us along with any Special Offers? ☐ **Yes** ☐ **No**

(We will not sell or pass on any contact details except to manage your order (see more on this on page 10))

Other Delivery Instructions:

Is this an order for collection? ☐

Is it a gift? ☐

If you are likely to be out during the day, please suggest where the parcel should be left or who else might accept delivery.

If you want your order to be sent as a gift to someone else (invoice to you), tick the box and put the recipient's name and address and postcode in the space provided to the right.

Payment Orders are not accepted without payment except by prior agreement.

Please include payment or please charge my Visa / Mastercard account.

Cheque enclosed ☐ Yes, value £ _____, or

Card No. · · ·

Card expiry date /

Security code (last three digits on reverse of card) Signature _____

Please fold this sheet into a smaller envelope to avoid postal surcharges



Ideal as
Gifts

2021 Collections

Colour Themed or Seasonal Collections.

Collection 411 - 'Lasagne' Collection

999-411

£21.00

Bulbs for a layered planter, instructions included.

Muscari Baby's Breath x 10

Narcissus Minnow x 10



*A happy customers's
picture - Angela S.
No apologies for
repeating what was
reported by many as a
big success last year.*

Narcissus Oxford Gold x 10

Tulipa Purissima x 10

Collection 405 - White Tulip Collection

999-405

£29.00

Tulipa Calgary x 10

Tulipa Clearwater x 10



Tulipa Honeymoon x 10

Tulipa Très Chic x 10

Saving more than 10% on individually purchased items

Collection 409 - Daffodil Collection

999-409

£30.00



Narcissus February Gold x 10

Narcissus Martinette x 5

Narcissus poeticus recurves x 15

Narcissus Sweetness x 15



Features of the Website

If you have seen a plant, or read about it somewhere and want to order it, but it is '**Out of Season**' you can '**Register an Interest**' by putting in your email address and the next time that we have that plant ready to order you'll get an email to say that you can look again with a view to ordering that item.



There is also a **Quick Order Form** function. If you have found items that you wish to order in the catalogue you just need to put their code number (as printed alongside every item in the catalogue ie Iris bucharica 103-09) into the **Search** field and then go to the **Selection Option** (below that) to be shown the pack sizes which you might order and then **Add** them. Once you have completed your list go to **Add items to your basket** and they will do just that. Easy!

You can buy our Gift Tokens through the website: Just click on **Shop** to access the **Gifts and Vouchers** section where you can make an order. The recipient can easily redeem the voucher which will be sent to them against a purchase either on the website or by phone.

There are also some items that we generally can only offer in smaller numbers and do not themselves justify space in the catalogue (or get left out for reasons of space). These are offered on the website without making it into the catalogue.

If you live more locally we anticipate adding a Click and Collect facility for potted plants that are too big to pack and send out by post, so if you live within a reasonable travelling distance keep an eye out for that.

Dormant Snowdrops 2021

We publish a list (circulated as an email to those that have requested it and thereafter added to the Website) of our dormant snowdrops as they become ready to plant in August/ September. If you wish to be added to this email address list please contact us.



If undelivered please
return to sender:
Avon Bulbs
Burnt House Farm
Mid Lambrook
South Petherton
Somerset
TA13 5HE

